

YAKIMA®

TAKE IT EASY.

**2027
DEALER WORKBOOK**





2027 Dealer Workbook

TABLE OF CONTENTS

New Product Overview	3
Why Yakima	5
Roof Racks	7
Bike	26
Truck	45
Camp	55
Cargo	67
Trailer	85
EXO	91
Water	99
Snow	113
Dealer Support	117

2027 New Product Overview

ROOF RACKS

- LowLine
- OverDrive
- RidgeTop HD

BIKE

- GateKeeper

PRODUCT UPDATES

- JetStream
- Adjustable MOLLE Panel
- FreshTrack
- JayLow
- BigCatch







What We Stand For

At Yakima, we empower adventurers to explore the world with confidence and freedom. Our innovative, durable racks and accessories are designed to build trust and enhance the journey, carrying your gear safely and securely whether you're hitting the open road, exploring open spaces, or discovering hidden trails. With Yakima, you can take it easy, knowing that every adventure is within reach and every journey is made better.



Our History

Yakima has a history of making bold moves in the name of new horizons. We started as a small machine shop in our namesake city in Washington state. Then in 1979, Don Banducci and Steve Cole, hardcore kayakers and cyclists, acquired the company. By 1984, they put Yakima on the map at the Summer Olympics, decking out every race vehicle with original aerodynamic fairings. Today, we continue to lead the niche we helped establish so many decades ago with the same enthusiasm for the widest skies and the open road.

ROOF RACKS

CARRYING SOLUTIONS



NEW

LowLine™ RAISED RAIL TOWER

#8000521



With a tough-grip claw system LowLine is a low profile raised rail tower that looks integrated to your vehicle, is quick and easy to install, and is compatible with all our latest T-slot mounted crossbars.

FEATURES

- ▶ Low profile tower for raised rail vehicles
- ▶ Modern aesthetics
- ▶ Easy installation
- ▶ Fits all Yakima T-slot mounted crossbars
- ▶ Rooftop tent compatible

WEIGHT LIMIT

- ▶ Tested and certified up to 220 lb (100 kg)

LOCKING

- ▶ SKS compatible



▶ Fits all Yakima T-slot mounted crossbars
(JetStream shown above)



▶ SKS lock compatible

NEW

OverDrive™ CROSSBARS

SM #8000535

MD #8000536

LG #8000537



OverDrive is a long-lasting, no-nonsense crossbar that delivers the function you need with a look that actually fits your vehicle. Built from durable aluminum, it's designed to handle up to 165 lbs of gear and accessories without overcomplicating things or overcharging you for it. The modern, streamlined shape keeps things quieter than you'd expect, holding its own with most aero bars, while new PosiLock end caps make setup simple and secure. Clean, capable, and easy on your wallet, OverDrive is built for the trips you're actually taking.

COMPETITIVE EDGE

- ▶ Premium construction at a reasonable price
- ▶ No more rusty steel crossbars
- ▶ New PosiLock end caps

FEATURES

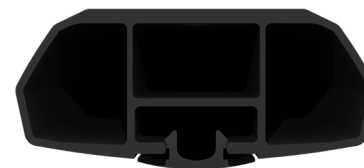
- ▶ Aluminum construction
- ▶ As quiet as many aerodynamic crossbars
- ▶ Modern aesthetics

WEIGHT LIMIT

- ▶ Road approved to 165lbs/75kg
- ▶ OffRoad rated up to 110lbs/50kg

AVAILABILITY

- ▶ Small - 50"
- ▶ Medium - 60"
- ▶ Large - 65"



▶ Powdercoated aluminum, built for reliability.



▶ Modern styling with new Posi-Lock end caps.

NEW

RidgeTop™ HD HEAVY DUTY CROSSBARS

XS #8000530
SM #8000531
S/M #8000532
MD #8000533
LG #8000534



A heavy duty crossbar designed specifically for roof rack systems. It is rugged, hyper functional, quieter than our truck and trailer HD Bar and looks great on modern CUV's, SUV's and trucks. It features OwlWing technology to keep your ride quiet, Lash Point End Caps, Top side T-slot and built in measurements for installation.

COMPETITIVE EDGE

- ▶ OwlWing technology for a quiet ride
- ▶ Heavy duty looks, heavy duty load capacity
- ▶ Available in 5 sizes for a clean look on any vehicle

FEATURES

- ▶ Built in wear protection strips
- ▶ Top side T-slot for accessory mounting
- ▶ Heavy duty end caps with lash point and T-slot access
- ▶ Full length bottom T-slot with laser etched measuring marks

WEIGHT LIMIT

- ▶ Road approved to 220lbs/100kg
- ▶ OffRoad approved up to 220lbs/100kg

AVAILABILITY

- ▶ Extra Small - 45"
- ▶ Small - 50"
- ▶ Small/Medium - 55"
- ▶ Medium - 60"
- ▶ Large - 65"



▶ Engineered for strength and heavy duty use.



▶ Heavy duty end caps with lash point and T-slot for accessory mounting.

UPDATE

JetStream™ CROSSBARS

XS #8000494 BLACK, #8000495 SILVER
SM #8000425 BLACK, #8000428 SILVER
S/M #8000496 BLACK, #8000497 SILVER
MD #8000426 BLACK, #8000429 SILVER
LG #8000498 BLACK, #8000499 SILVER



The JetStream crossbars are aerodynamic, sleek, and up for the task of hauling gear. They are available in black or silver; customer's choice.

WHAT'S NEW

- ▶ New sizes

COMPETITIVE EDGE

- ▶ Aluminum construction
- ▶ T-Slot infill allows for t-slot gear mounts

ROOF RACK TOWER COMPATIBILITY

- ▶ All StreamLine™ System Towers

WEIGHT LIMIT

- ▶ Up to 165lbs

AVAILABILITY

- ▶ Extra Small - 45"
- ▶ Small - 50"
- ▶ Small/Medium - 55"
- ▶ Medium - 60"
- ▶ Large - 65"



▶ Aluminum construction designed for aerodynamics and style.



▶ T-slot infill allows for t-slot gear mounts.

StreamLine FX System

Integrated towers and crossbars deliver a clean, connected look.



BaseLine™ FX NAKED ROOF

#VARIES

INSTALLATION HARDWARE

- BaseClips™ - vehicle specific
#VARIES

COMPETITIVE EDGE

- Pitch and tow adjustments to mimic the curvature of a vehicle's roof
- Aluminum construction and T-Slot infill allows for t-slot gear mounts

LOCKING

- Accept 1 SKS lock per tower
(sold separately)

WEIGHT LIMIT

- 165-lbs (depending on vehicle roof limit)

VEHICLE ROOF TYPE

- Naked roof



SkyLine™ FX FLUSH SIDE RAILS

#VARIES

INSTALLATION HARDWARE

- Landing Pad - vehicle specific
sold separately. #VARIES

COMPETITIVE EDGE

- Pitch and tow adjustments to mimic the curvature of a vehicle's roof
- Aluminum construction and T-Slot infill allows for t-slot gear mounts

LOCKING

- Accept 1 SKS lock per tower
(sold separately)

WEIGHT LIMIT

- 165-lbs (depending on vehicle roof limit)

VEHICLE ROOF TYPE

- Factory fixed points
- Track installations
- Custom installed roof racks



TimberLine™ FX RAISED SIDE RAILS

#VARIES

INSTALLATION HARDWARE

- None required

COMPETITIVE EDGE

- No extra hardware; the rubber coated metal clip hooks under the rail securely
- Aluminum construction and T-Slot infill allows for t-slot gear mounts

LOCKING

- Accept 1 SKS lock per tower
(sold separately)

WEIGHT LIMIT

- 165-lbs (depending on vehicle roof limit)

VEHICLE ROOF TYPE

- Raised side rails



SightLine™ FX FLUSH-MOUNTED SIDE RAILS

#VARIES

INSTALLATION HARDWARE

- SightClips™ - vehicle specific
sold separately. #VARIES

COMPETITIVE EDGE

- Once installed, the entire rack is easy to remove and reattach tool-free
- Aluminum construction and T-Slot infill allows for t-slot gear mounts

LOCKING

- Accept 1 SKS lock per tower
(sold separately)

WEIGHT LIMIT

- 165-lbs (depending on vehicle roof limit)

VEHICLE ROOF TYPE

- Flush side rails

StreamLine™ System Roof Rack Towers

Matte finish on the tower covers and tone-on-tone black logos.



BaseLine™ Towers NAKED ROOF TOWER

2-PACK #8000183, 4-PACK #8000162

INSTALLATION HARDWARE

- ▶ BaseClips™ - vehicle specific sold separately. #VARIES

CROSSBAR COMPATIBILITY

- ▶ All Yakima® crossbars
HD Bar and RoundBar® require adapter

COMPETITIVE EDGE

- ▶ Pitch and tow adjustments to mimic the curvature of a vehicle's roof

LOCKING

- ▶ Accept 1 SKS lock per tower (sold separately)

WEIGHT LIMIT

- ▶ 165-lbs (depending on vehicle roof limit)

VEHICLE ROOF TYPE

- ▶ Naked roof



SkyLine™ Towers TRACKS OR FIXED POINT TOWER

2-PACK #8000184, 4-PACK #8000163

INSTALLATION HARDWARE

- ▶ Landing Pad - vehicle specific sold separately. #VARIES

CROSSBAR COMPATIBILITY

- ▶ All Yakima® crossbars
HD Bar and RoundBar require adapter
- ▶ LockNLoad™ Platforms with the addition of LockNLoad SL Adapter

COMPETITIVE EDGE

- ▶ Once installed, the entire rack is easy to remove and reattach tool-free

LOCKING

- ▶ Accept 1 SKS lock per tower (sold separately)

WEIGHT LIMIT

- ▶ 220-lbs (depending on vehicle roof limit)

VEHICLE ROOF TYPE

- ▶ Factory fixed points
- ▶ Track installations
- ▶ Custom installed roof racks



TimberLine™ Towers RAISED SIDE RAILS TOWER

2-PACK #8000185, 4-PACK #8000164

INSTALLATION HARDWARE

- ▶ N/A

CROSSBAR COMPATIBILITY

- ▶ All Yakima® crossbars
HD Bar and RoundBar require adapter
- ▶ LockNLoad™ Platforms with the addition of LockNLoad SL Adapter

COMPETITIVE EDGE

- ▶ No extra hardware; the rubber coated metal band wraps around the rail with included tool

LOCKING

- ▶ Accept 1 SKS lock per tower (sold separately)

WEIGHT LIMIT

- ▶ 165-lbs (depending on vehicle roof limit)

VEHICLE ROOF TYPE

- ▶ Raised side rails



SightLine™ Towers FLUSH SIDE RAILS TOWER

4-PACK #8001635

INSTALLATION HARDWARE

- ▶ SightClips™ - vehicle specific sold separately. #VARIES

CROSSBAR COMPATIBILITY

- ▶ All Yakima® crossbars
HD Bar and RoundBar require adapter

COMPETITIVE EDGE

- ▶ Pitch adjustments to mimic the curvature of a vehicle's roof

LOCKING

- ▶ Accept 1 SKS lock per tower (sold separately)

WEIGHT LIMIT

- ▶ 165-lbs (depending on vehicle roof limit)

VEHICLE ROOF TYPE

- ▶ Flush side rails

Roof Rack Hardware and Kits

Four towers make up the StreamLine System that cover a variety of vehicle roofs.



BaseClips™

HARDWARE FOR BASELINE™ TOWERS

Vehicle specific hardware attaches the BaseLine towers to a vehicle with a naked roof via the door jam shape. Sold in pairs due to vehicle roof variances.

SETS OF 2 #VARIES - SEE PRICE LIST



SightClips™

HARDWARE FOR SIGHTLINE™ TOWERS

Vehicle specific hardware attaches SightLine towers to vehicles with flushed side rails using compression.

SETS OF 4 #VARIES - SEE PRICE LIST



Landing Pads

HARDWARE FOR SKYLINE TOWERS

Vehicle specific molded fittings and hardware for SkyLine towers. Each Landing Pad set-up varies in shape and size.

Landing Pads 13, 15-22 (set of 4) #VARIES – SEE PRICE LIST

Landing Pad 23 – Toyota RAV4 2019+ #8000249

Landing Pad 24 – Toyota Tacoma 2005+ #8000251

Landing Pad 25 – BMW various sedans #8000250

Landing Pad 27 – Subaru Outback 2020+ #8000254

Landing Pad 28 – Toyota Highlander 2020+ #8000255

Landing Pad 26 – Higher load HD Track applications #8000256

Landing Pad 29 – Toyota 4-Runner 2010-2020 #8000257

Landing Pad 30 – Lexus GX 2010-2020 #8000258

Landing Pad 31 – Nissan Rogue 2021+ #8000259

Landing Pad 35 – RSI Smart Cap #8000268

Landing Pad 41 – Toyota Grand Highlander 2024+ #8000265

Roof Rack Accessories

Accessories to build a full roof rack product line.



LoadStop™ ROOF RACK LOAD BRACKET

Creates an edge on the roof rack to brace loads that are placed on top of the crossbars. RoundBar only.
#8005000



Universal Might Mounts™ GEAR MOUNT CROSSBAR ADAPTER

Conveniently transforms a RoundBar only gear mount into one that will fit onto anything, like modern aerodynamic crossbars.
UNIVERSAL SET OF 4 #8003590



9-ft SKS Cable LOCKING CABLE

9-foot vinyl wrapped steel cable with SKS lock core and key.
#8007233



Accessory Lock Housing GEAR MOUNT LOCK

Creates a locking point for some Yakima® mounts.
#8007220



SKS Lock Cores ROOF RACK AND MOUNT LOCKS

The Same Key System allows the owner to lock all of their Yakima® products with the same key.
2-PACK #8007202 4-PACK #8007204
6-PACK #8007206 8-PACK #8007208



WindShield™ ROOF RACK WIND FAIRING

Pushes wind up and over roof racks and gear mounts to reduce wind noise.

WindShield 34" #8005016 WindShield 40" #8005017
WindShield 46" #8005018 WindShield 52" #8005019

Custom Installation Fixtures and Hardware

Hardware for custom install solutions.

TrackTower™ TOWERS FOR DIRECT TO TRACK APPLICATIONS

2-PACK #8000198, 4-PACK #8000199



INSTALLATION TECHNOLOGY:

- ▶ Direct to Track

COMPETITIVE EDGE

- ▶ Simple design and low price
- ▶ Installs direct to track
- ▶ Robust and rugged design

LOCKING & ACCESSIBILITY

- ▶ SKS is sold separately

WEIGHT LIMIT

- ▶ 165 lbs (standard)
- ▶ 220 lbs (with HD Bar)

CONSUMER

- ▶ Overland Enthusiast
- ▶ Core Outdoor
- ▶ Traditional Outdoorsman

AVAILABILITY

- ▶ Set of 2
- ▶ Set of 4



▶ Compatible with all Yakima Bars and Platforms.
SKS lock cores sold separately.

Custom Installation Fixtures and Hardware

Hardware for custom install solutions.



RoundBar™ CLASSIC STEEL ROUND CROSSBAR

#VARIES SM, MD, LG, XL

40 years strong and still kickin'. The RoundBar is what brought our brand to be considered one of the best and it still rings true.

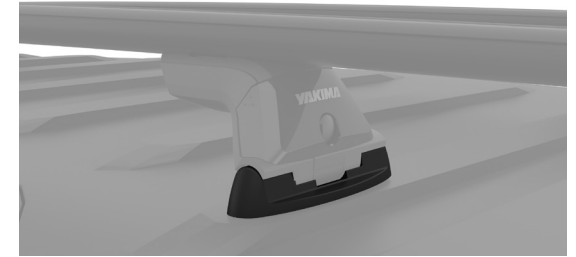


1A RainGutter Towers ROUNDBAR TOWERS FOR RAINGUTTERS

Great for Westfalia, Land Rover, Wrangler, and VW Bus.
#8000101 SET OF 4

1A HiRise Spacers INCREASE CLEARANCE

Increases the vertical clearance on a 1A RainGutter Tower.
#8001101 SET OF 4



Permanent Landing Pads TOWER MOUNTING ACCESSORY

Permanently attached bases provide a mounting point for SkyLine Towers.

LP 6 #8000226 SET OF 2

LP 7 #8000227 SET OF 2

LP 21 #8000247 SET OF 4



SideLoader Bracket TRUCK SHELL ROOF RACK BRACKET

Mounts between the windows and shell top.
#8008002 SET OF 2



Tracks with CapNuts FIBERGLASS INSTALLATION

54" TRACKS WITH CAPNUTS #8001138
60" TRACKS WITH CAPNUTS #8001135



Tracks with PlusNuts SHEET METAL INSTALLATION

42" TRACKS WITH PLUSNUTS #8001126
54" TRACKS WITH PLUSNUTS #8001127



HD Tracks with CapNuts CUSTOM INSTALLATION

54" HD TRACK WITH CAPNUTS #8001631

60" HD TRACK WITH CAPNUTS #8001632

72" HD TRACK WITH CAPNUTS #8001633

DIAMONDBACK BASE TRACK #8001634

RuggedLine™ HD Collection

Heavy Duty Platform-to-Vehicle Mounting System



RuggedLine HD 4Runner

HEAVY DUTY PLATFORM-TO-VEHICLE MOUNTING SYSTEM FOR 5TH GENERATION 4RUNNER

#8005065

FEATURES

- ▶ Built-in M6 Compatible Accessory Slots
- ▶ Metal Fairing ensuring a quiet ride

MATERIAL

- ▶ Engineered steel structure and powder coat finish for long lasting strength and durability

WEIGHT LIMIT

- ▶ Tested and certified up to a 330 lb dynamic off-road load rating

LOCKNLOAD COMPATIBILITY

- ▶ For use with LockNLoad Platform Size E (49x84)

INSTALL

- ▶ Custom Install: Removal of the Toyota factory rails required, RuggedLine HD attaches to factory mounting points and custom installed points for extra strength

CONSUMER

- ▶ Core Outdoor
- ▶ Overland/Offroad
- ▶ Rugged Adventurer



RuggedLine HD Tacoma

HEAVY DUTY PLATFORM-TO-VEHICLE MOUNTING SYSTEM FOR TACOMA DOUBLE CAB

2ND & 3RD GEN #8005066, 4TH GEN #8005074

FEATURES

- ▶ Built-in M6 Compatible Accessory Slots
- ▶ Metal Fairing ensuring a quiet ride

MATERIAL

- ▶ Engineered steel structure and powder coat finish for long lasting strength and durability

WEIGHT LIMIT

- ▶ Tested and certified up to a 220 lb dynamic off-road load rating

LOCKNLOAD COMPATIBILITY

- ▶ For use with LockNLoad Platform Size K (49x55)

INSTALL

- ▶ Attaches to Toyota factory mounting points for reliable strength, no drilling required.

CONSUMER

- ▶ Core Outdoor
- ▶ Overland/Offroad
- ▶ Rugged Adventurer



RuggedLine HD Track Mount

HEAVY DUTY PLATFORM-TO-VEHICLE MOUNTING SYSTEM

#8005067

FEATURES

- ▶ Built-in M6 Compatible Accessory Slots

MATERIAL

- ▶ Engineered steel structure and powder coat finish for long lasting strength and durability

WEIGHT LIMIT

- ▶ Tested and certified up to a 330 lb dynamic off-road load rating

LOCKNLOAD COMPATIBILITY

- ▶ Works with various LockNLoad Platform sizes, depending on vehicle

INSTALL

- ▶ Attaches to Yakima HD and Classic Tracks, including Jeep RibCage, and some factory tracks

CONSUMER

- ▶ Core Outdoor
- ▶ Overland/Offroad
- ▶ Rugged Adventurer

RuggedLine™ HD Collection

Heavy Duty Platform-to-Vehicle Mounting System



RuggedLine HD Grand Cherokee

HEAVY DUTY PLATFORM-TO-VEHICLE MOUNTING SYSTEM FOR 4TH GENERATION GRAND CHEROKEE WITH METAL TRACKS

#8005068

FEATURES

- ▶ Built-in M6 Compatible Accessory Slots
- ▶ Metal Fairing ensuring a quiet ride

MATERIAL

- ▶ Engineered steel structure and powder coat finish for long lasting strength and durability

WEIGHT LIMIT

- ▶ Tested and certified up to a 220 lb dynamic off-road load rating

LOCKNLOAD COMPATIBILITY

- ▶ For use with LockNLoad Platform Size K (49x55)

INSTALL

- ▶ Removal of the Jeep factory rails required, RuggedLine HD attaches to factory mounting points for reliable strength, no drilling required

CONSUMER

- ▶ Core Outdoor
- ▶ Overland/Offroad
- ▶ Rugged Adventurer



RuggedLine HD RAM

HEAVY DUTY PLATFORM-TO-VEHICLE MOUNTING SYSTEM FOR 4TH GENERATION DODGE/RAM CREW CAB 1500

#8005069

FEATURES

- ▶ Built-in M6 Compatible Accessory Slots
- ▶ Metal Fairing ensuring a quiet ride

MATERIAL

- ▶ Engineered steel structure and powder coat finish for long lasting strength and durability

WEIGHT LIMIT

- ▶ Tested and certified up to a 220 lb dynamic off-road load rating

LOCKNLOAD COMPATIBILITY

- ▶ For use with LockNLoad Platform Size B (55x60)

INSTALL

- ▶ Custom Install: Attaches to the roof with custom installed mounting points

CONSUMER

- ▶ Core Outdoor
- ▶ Overland/Offroad
- ▶ Rugged Adventurer



RuggedLine HD RAV4

HEAVY DUTY PLATFORM-TO-VEHICLE MOUNTING SYSTEM FOR 5TH GENERATION RAV4

#8005070

FEATURES

- ▶ Built-in M6 Compatible Accessory Slots
- ▶ Metal Fairing ensuring a quiet ride

MATERIAL

- ▶ Engineered steel structure and powder coat finish for long lasting strength and durability

WEIGHT LIMIT

- ▶ Tested and certified up to a 220 lb dynamic off-road load rating

LOCKNLOAD COMPATIBILITY

- ▶ For use with LockNLoad Platform Size K (49x55)

INSTALL

- ▶ Custom Install: Removal of the Toyota factory rails Required, RuggedLine HD attaches to factory mounting points and custom installed points for extra strength

CONSUMER

- ▶ Core Outdoor
- ▶ Overland/Offroad
- ▶ Rugged Adventurer

RibCage™ JK

CUSTOM ROOFTOP TRACK SYSTEM WITH INTERNAL SUPPORTS FOR JEEP WRANGLER HARDTOPS JK 4-DOOR, 2007-2017

#8001051



INSTALLATION TECHNOLOGY

- ▶ Internal supports attach to the roll cage for maximum lateral stability of the composite roof
- ▶ Minimal footprint will not intrude on passenger or cargo space
- ▶ Freedom panels are removable while system is in full use
- ▶ After RibCage installation, hardtop remains fully and easily removable

COMPETITIVE EDGE

- ▶ Off-road, dynamic weight rating - up to 300lbs*
- ▶ Static weight rating - up to 825lbs*
- ▶ Allows for adjustable crossbar spreads, perfect for 2 and 3 bar systems

COMPLETE THE SYSTEM

- ▶ Yakima SkyLine Tower and LandingPad 26 with crossbars or LockNLoad platform of your choice
- ▶ Yakima TrackTower with crossbars or LockNLoad platform of your choice
- ▶ Yakima RuggedLine HD Track with LockNLoad Platform

INSTALL

- ▶ Permanent custom install of tracks

BEST USE CASE

- ▶ Off-road recovery gear
- ▶ Rooftop tent foundation

CONSUMER

- ▶ Jeep overland/Off-road
- ▶ Rugged Adventurer

*When paired with 3 crossbar (JetStream, HD bar or 6 Tower LockNLoad systems)



▶ Fully Tested and Off-road rated up to a 330lb dynamic load rating and a 825lb static load rating.



▶ The internal supports attach to the roll cage ensuring lateral stability for maximum strength.



▶ 48" HD Track sections allows for variable crossbar spreads to support 2 or 3 bar or multiple tower LockNLoad platform setups.



▶ Rooftop Tent compatible.

RibCage™ JL

CUSTOM ROOFTOP TRACK SYSTEM WITH INTERNAL SUPPORTS FOR JEEP WRANGLER HARDTOPS

JL 4-DOOR, 2018+

#8001052



INSTALLATION TECHNOLOGY

- ▶ Internal supports attach to the roll cage for maximum lateral stability of the composite roof
- ▶ Minimal footprint will not intrude on passenger or cargo space
- ▶ Freedom panels are removable while system is in full use
- ▶ After RibCage installation, hardtop remains fully and easily removable

COMPETITIVE EDGE

- ▶ Off-road, dynamic weight rating - up to 300lbs*
- ▶ Static weight rating - up to 825lbs*
- ▶ Allows for adjustable crossbar spreads, perfect for 2 and 3 bar systems

COMPLETE THE SYSTEM

- ▶ Yakima SkyLine Tower and LandingPad 26 with crossbars or LockNLoad platform of your choice
- ▶ Yakima TrackTower with crossbars or LockNLoad platform of your choice
- ▶ Yakima RuggedLine HD Track with LockNLoad Platform

INSTALL

- ▶ Permanent custom install of tracks

BEST USE CASE

- ▶ Off-road recovery gear
- ▶ Rooftop tent foundation

CONSUMER

- ▶ Jeep overland/Off-road
- ▶ Rugged Adventurer



Fully Tested and Off-road rated up to a 330lb dynamic load rating and a 825lb static load rating.



The internal supports attach to the roll cage ensuring lateral stability for maximum strength.



48" HD Track sections allows for variable crossbar spreads to support 2 or 3 bar or multiple tower LockNLoad platform setups.



Rooftop Tent compatible.

*When paired with 3 crossbar (JetStream, HD bar or 6 Tower LockNLoad systems)

LockNLoad™ Collection HEAVY-DUTY ROOF RACK PLATFORM

#VARIES



A totally customizable approach to a roof rack. The LockNLoad collection features 6 different sizes of platforms so that the consumer can build their adventure-mobile to their needs.

INSTALLATION TECHNOLOGY

- ▶ Attaches to a vehicle in one of two ways; Directly to an existing roof racks crossbars using LockNLoad™ Crossbar Clamps (sold separately), or directly to TimberLine™ or SkyLine™ roof rack towers with the LockNLoad SL Adapter (sold separately).

COMPETITIVE EDGE

- ▶ Yakima® Off-Road Rated to 165–330 lbs. (depending on vehicle fit and roof type)
- ▶ Side-to-side slats act like crossbars for easily mounting most bike, kayak, ski mounts and more
- ▶ Engineered aluminum construction features a textured black powder-coat finish for durability and style

BEST USE CASE

- ▶ Overland travel
- ▶ Heavy-loads
- ▶ Off-the-grid accessories
- ▶ Outdoor adventure families

USER

- ▶ Overland
- ▶ Core Outdoor



▶ LockNLoad Platforms are lines with T-slot channels to mount accessories like EyeBolts, seen here.

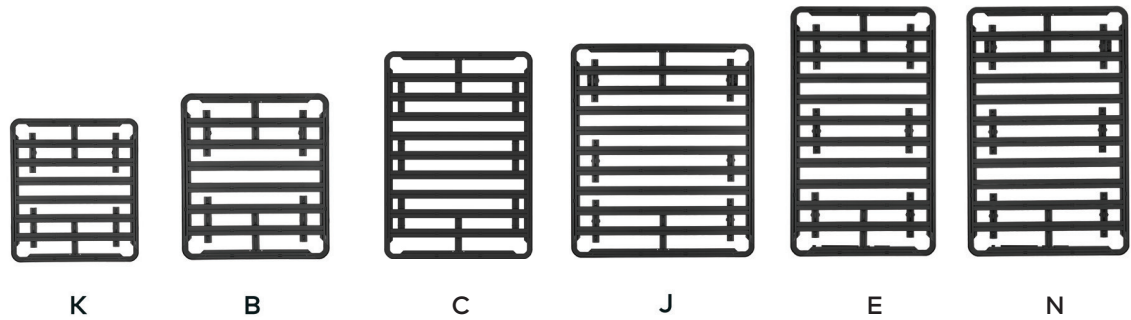


▶ A built in wind fairing on the front, underside of the all platforms allows for a decrease in wind noise.

LockNLoad™ Sizes and Overhead Comparison

Available in six sizes for a variety of use cases and vehicles.

CROSS-PRODUCT COMPARISON			
Size	Dimensions	Vehicle Popularity	Part Number
K	55" X 49"	● ● ● ● ● ●	#8005044
B	60" X 54"	● ● ● ● ●	#8005045
C	76" X 54"	● ● ● ● ●	#8005063
J	76" X 64"	● ● ● ●	#8005046
E	84" X 49"	● ● ● ●	#8005047
N	84" X 54"	● ●	#8005048



LockNLoad™ Vehicle Connections

Vehicle attachment options.



LockNLoad Crossbar Clamps ROOF RACK CROSSBAR CLAMPS

Attach the LockNLoad™ platform to an existing Yakima® roof rack, factory rack, or other aftermarket roof-rack system.

One pair of clamps is required for each crossbar.

#8005039 2-PACK



LockNLoad SL Adapter STREAMLINE TOWER ADAPTER

Structural steel brackets with powder-coat finish for durability and resistance to the elements eliminates the need for a traditional crossbar. Allows the platform to sit lower and closer to the roof - TimberLine™, SkyLine™ TrackTowers only.

#8005042 2-PACK



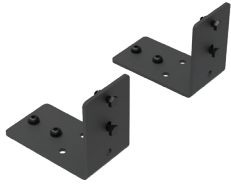
LockNLoad Expansion Pack INCREASES LOCKNLOAD LOAD RATING

The expansion pack is necessary for increasing load rating of the LockNLoad platform.

#8005061

LockNLoad™ Accessories

Accessories to build a full overland adventure space.



Awning T-Slot Bracket AWNING MOUNTING BRACKET

Dedicated bracket to mount Yakima® awnings on T-slot crossbars and LockNLoad platforms. Usable on all Yakima® awnings.
#8004113

- ▶ Allows a DayBreak SM to be deployed in the rearward direction of a vehicle from a LockNLoad platform.
- ▶ Includes 3 height settings to allow a custom position on your vehicle.
- ▶ For DayBreak only.



LockNLoad Perimeter Rails OUTER EDGE GEAR RESTRAINTS

Creates an outside perimeter around each LockNLoad platform size and creates tie-down points for gear. Sold in sets of 4 rails (2X right/left side rails and 2X front/rear rails).

Perimeter Rail Kit K (for 55x49) #8005055

Perimeter Rail Kit B (for 60x54) #8005056

Perimeter Rail Kit J (for 76x65) #8005057

Perimeter Rail Kit E (for 84x49) #8005058

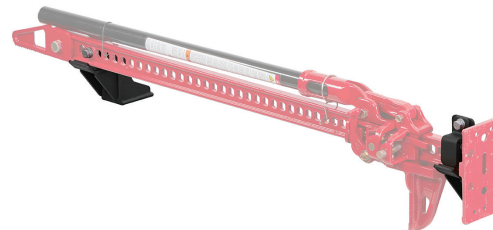
Perimeter Rail Kit N (for 84x54) #8005059

Perimeter Rail Kit C (for 76x54) #8005064



Spare Wheel Holder SPARE TIRE MOUNT FOR LOCKNLOAD

Holds 1 wheel with tire, up to 100 lbs. Holds max tire size of 42 x 17R. Includes heavy-duty hook straps with steel ratchets, cast-steel eyelets, and a durable black-zinc coating.
#8005032



High Lift Jack Holder HIGH LIFT MOUNT FOR LOCKNLOAD

Securely carries 1 high-lift jack with a 50 mm steel standard bar up to 35 lbs. Features a lock loop for users own padlock.
#8005033



Corner Bracket Kit GEAR RESTRAINTS FOR LOCKNLOAD

Secures hard-shelled containers up to 3' tall and 110 lbs./50 kg. Heavy-duty stamped-steel construction, with a durable black-zinc coating.
#8005036

LockNLoad™ Accessories

Accessories to build a full overland adventure space.



Jerry Can Holder JERRY CAN HOLDER FOR LOCKNLOAD

Holds 1 full 10L or 20L jerry water/fuel can made of metal or plastic, up to 45 lbs./25 kg. Includes heavy-duty hook straps with steel ratchets, cast-steel eyelets, and a durable black-zinc coating.

#8005038



TopGrip™ T-SLOT PADDLE CARRIER

Attach it to any Yakima® crossbar or our ShowDown™ mount and secure your paddle in the padded clamps. Works with axes, shovels, or other long items.

#8004086



Recovery Track Mount CARRIES 1 SET OF RECOVERY TRACKS

Easy to install and use, this mount is designed to work with LockNLoad, our Truck Collection's HD Bars and SideBar™, as well as most other T-slot crossbars.

#8001164



Rotopax Mount T-SLOT ROTOPAX MOUNT

Specifically designed for t-slot attachment to carry up to 40 lbs. of RotopaX™ water and fuel packs on LockNLoad or SideBar.

#8001167



LoadStop T-SLOT LOAD STOPPING TIE-DOWNS

Installs tool-free to any t-slot channel and features a tie-down point on top. They are made of sturdy steel with a durable black-zinc coating.

#8001161 SET OF 4



EyeBolts T-SLOT TIE-DOWN POINTS

Installs tool-free to any t-slot and creates instant tie-down points for securing gear.

#8001162 SET OF 2



HD Hook Straps HOOK AND PADDED BUCKLE

A handy addition to any toolbox, HD Hook Straps feature a clipping hook and padded buckle with a 250 lb load rating per strap.

#8001165 SET OF 2



Heavy Duty Straps EXTRA-STRONG TIE-DOWNS

Nylon straps with heavy-duty rubber-covered cinching clasps.

#8005006

BIKE

CARRYING SOLUTIONS



NEW

GateKeeper™ TRUCK BED TAILGATE PAD

MD #8007570, LG #8007571



The GateKeeper tailgate pad is a perfect companion for pick-up bed bike transport. The durable exterior protects your bike from your truck's tailgate while the soft felt backing protects your truck's paint. Integrated SitTight™ bike cradles and G-hook buckles add extra stability and protection for your bikes, and the HindSight™ tuck-away cover opens up the view for your back-up camera, leaving you with a worry free shuttle to the top.

COMPETITIVE EDGE

- ▶ New nylon G-Hook tension lock is easy on carbon bike frames and painted surfaces
- ▶ New longer frames straps for larger downtubes up to 4.5" / 115mm
- ▶ New modern pad graphic inspired by our brand's home
- ▶ Easiest way to carry a lot of bikes safe and secure

FEATURES

- ▶ Rugged, tarpaulin coated polyester outer material resists abrasion and weather damage
- ▶ Extra soft felt backing protects your trucks paint job
- ▶ Reinforced webbing ends for easy installation under the tailgate
- ▶ Padded SitTight™ cradles protect and secure bike frames
- ▶ HindSight™ tuck-away cover opens up the view for your back-up camera

BIKE CAPACITY

- ▶ MD - 5 Bikes
- ▶ LG - 6 Bikes

INSTALL & COMPATIBILITY

- ▶ MD - Fits mid-size and some older full-size trucks with tailgates from 53-61" wide
- ▶ LG - Fits modern, full-size trucks with tailgates 62" or wider

LOCKING

- ▶ Add your own bike lock to the built-in cable lock loop to secure GateKeeper and your bikes to your truck



▶ Padded SitTight™ cradles and updated strap secure most bikes.



▶ HindSight™ tuck-away cover opens up the view for your back-up camera.

OnRamp™ LX

E-BIKE HITCH TRAY RACK

1.25-INCH #8002757, 2-INCH #8002756



The OnRamp LX blends sleek design with the strength and versatility modern ebikes demand to ease the challenge of carrying not only heavier and longer bikes, but bikes with fenders.

COMPETITIVE EDGE

- ▶ Fits a wide variety of bike shapes, lengths and weights
- ▶ Integrated ramp allows user to roll bikes into place
- ▶ Aluminum trays are easily adjustable for bike placement and size
- ▶ Stadium Seating prevents bike to bike interference

HITCH COMPATIBILITY

- ▶ Available in 2" and 1.25"
- ▶ 2" Only - BackSwing and StraightShot Accessory Compatible

MAX WHEEL BASE

- ▶ 54"

WEIGHT LIMIT

- ▶ Road approved 80-lbs(2"), 70-lbs(1.25")
- ▶ RV approved at 80-lbs(2")
- ▶ OffRoad approved at 48-lbs(2"), (all weights per bike)

BIKE CAPACITY

- ▶ 2

CONSUMER

- ▶ Committed Cyclist
- ▶ General Travel

BEST USE CASE

- ▶ E-Bikes
- ▶ Mountain bikes
- ▶ Fat bikes
- ▶ Lifestyle bikes

TIRE RANGE/WIDTHS

- ▶ Accommodates up to 29" rims
- ▶ Fits up to 5" wide tires

GEAR PROTECTION

- ▶ Rubber covers protect the bike frame

LOCKING

- ▶ HitchBolt locks rack to vehicle



*Yakima BackSwing Accessory Sold Separately



▶ Integrated ramp for easy, roll-on loading, and stows away neatly on the rack.



▶ Tiered bike trays minimize bike to bike interference and increase ground clearance.



▶ Adjustable and telescoping bike trays can accommodate wheelbases from 33" to 54", kids' to cargo bikes.

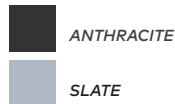


▶ 3-Position tilt drops to allow trunk access with bikes loaded, and folds flat against the car with bikes unloaded.

StageTwo™

PREMIUM PLATFORM HITCH BIKE RACK

ANTHRACITE 1.25-INCH #8002759, 2-INCH #8002758
 SLATE 2-INCH #8002761



Continuing its legacy of heavy-duty performance and thoughtful design, the StageTwo raises the bar with a host of new features and a promise of performance and ease-of-use to every ride.

WHAT'S NEW

- ▶ New ratings for on-road, RV, eBikes, StraightShot, BackSwing, wheel size and wheelbase
- ▶ New SpeedKnob and rack tilt mechanisms are updated for easier use
- ▶ New V-shaped tray design is easier to assemble and easier to roll bikes into position, especially when using the RampUp accessory, which can now store right on the rack
- ▶ New optimized pivot geometry has better tailgate clearance

HITCH COMPATIBILITY

- ▶ Available in 2" and 1.25"
- ▶ Compatible with the Yakima BackSwing and StraightShot hitch accessories (2")

MAX WHEEL BASE

- ▶ Accommodates bike wheelbases from 30" to 52"

WEIGHT LIMIT (PER BIKE)

- ▶ Road approved 70-lbs (2"), 60-lbs (1.25")
- ▶ RV approved at 70-lbs (2")
- ▶ OffRoad approved at 42-lbs (2")

BIKE CAPACITY

- ▶ 2

CONSUMER

- ▶ Committed Cyclist

BEST USE CASE

- ▶ E-Bikes
- ▶ Mountain bikes
- ▶ Fat bikes

TIRE RANGE/WIDTHS

- ▶ Accommodates 16" to 29" rims up to 5" wide

GEAR PROTECTION

- ▶ StrongArm™ hook secures bike at wheels, protecting painted surfaces and carbon frames

LOCKING

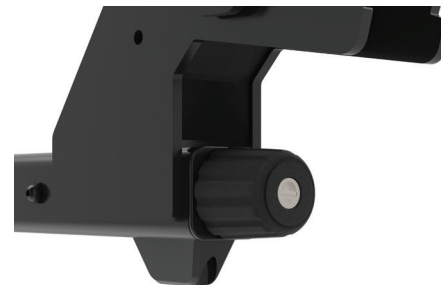
- ▶ Integrated SKS locks included to secure bikes to rack and rack to vehicle receiver



▶ RampUp compatible V-shaped trays for easy, roll-on loading, and stores neatly on the rack.



▶ StadiumSeating™ tiered and adjustable bike trays offset to minimize bike to bike interference.



▶ Updated tool-free locking SpeedKnob for secure and simple installation and removal.



▶ Convenient remote 3-Position tilt drops to allow trunk access with bikes loaded, and folds flat against the car with bikes unloaded.

StageTwo™ +2 Add-On PREMIUM PLATFORM HITCH BIKE RACK ADD ON

ANTHRACITE #8002760, SLATE #8002762



WHAT'S NEW

- ▶ New ratings for on-road, StraightShot, and BackSwing
- ▶ New V-shaped tray design is easier to assemble and easier to roll bikes into position, especially when using the RampUp accessory, which can now store right on the rack

MAX WHEEL BASE

- ▶ Accommodates bike wheelbases from 30" to 52"

TIRE RANGE/WIDTHS

- ▶ Accommodates 16" to 29" rims up to 5" wide

GEAR PROTECTION

- ▶ StrongArm™ hook secures bike at wheels, protecting painted surfaces and carbon frames

WEIGHT LIMIT (PER BIKE)

- ▶ Road tested and approved up to 40 lbs per bike (2" AddOn)
- ▶ Off-Road rated up to 24 lbs per bike (2" AddOn)

LOCKING

- ▶ Integrated SKS locks included to secure bikes to rack and rack to vehicle receiver



- ▶ Convenient remote 3-Position tilt drops to allow trunk access with bikes loaded, and folds flat against the car with bikes unloaded.



- ▶ StadiumSeating™ tiered and adjustable bike trays offset to minimize bike to bike interference.

StepUp™ Swing

FULL FEATURED HITCH PLATFORM BIKE RACK

#8002770



Sleek, heavy duty design that is fully featured for a core cyclist's needs; easy to fit, load and unload bikes with quick swing-away access to the rear of the vehicle to grab gear or load groceries.

COMPETITIVE EDGE

- ▶ Integrated swing-away feature provides easy access to the rear of the vehicle, with or without bikes loaded
- ▶ Convenient remote 3-Position tilt lowers for trunk access with bikes loaded and folds flat against the car when bikes are unloaded

HITCH COMPATIBILITY

- ▶ Available in 2"
- ▶ Compatible with the Yakima StraightShot and FlipFlop hitch accessories

WHEELBASE RANGE

- ▶ Accommodates bike wheelbases from 32" to 52"/813-1372mm

WEIGHT LIMIT (PER BIKE)

- ▶ Road approved to 65lbs/29.5kg
- ▶ RV approved to 43.5lbs/19.75kg
- ▶ OffRoad rated up to 43.5lbs/19.75 kg

BIKE CAPACITY

- ▶ 2

CONSUMER

- ▶ Core Cyclist

BEST USE CASE

- ▶ Mountain bikes, eMTB
- ▶ Road/Gravel Bike, eRoad
- ▶ Fitness/Hybrid Bikes

TIRE RANGE/WIDTHS

- ▶ Accommodates 16" to 29" up to 4.5" wide

GEAR PROTECTION

- ▶ StrongArm™ hook secures bike at wheels, protecting painted surfaces and carbon frames

LOCKING

- ▶ Integrated SKS locks included to secure bikes to rack and rack to vehicle receiver



Integrated swing-away feature provides easy access to the rear of the vehicle, with or without bikes loaded.



StadiumSeating™ tiered spine reduces bike-to-bike interference and maximizes ground clearance.



Convenient and ergonomic tilt-activation lever for remote 3-position tilt.



RampUp-compatible V-shaped trays allow for easy roll-on loading and stow away neatly on the rack.

StepUp™

FULL FEATURED HITCH PLATFORM BIKE RACK

2-INCH #8002771, 1.25-INCH #8002772



Sleek, heavy duty design that is fully featured for a core cyclists needs; easy to install and easy to load bikes to get riders on their way.

COMPETITIVE EDGE

- ▶ Convenient remote 3-Position tilt lowers for trunk access with bikes loaded and folds flat against the car when bikes are unloaded
- ▶ Secures to a 2" hitch receiver with an allen-driven SpeedWedge for a secure, simple installation and removal (2" only)

HITCH COMPATIBILITY

- ▶ Available in 2" and 1.25"
- ▶ Compatible with the Yakima BackSwing, StraightShot and FlipFlop hitch accessories (2" only)

WHEELBASE RANGE

- ▶ Accommodates bike wheelbases from 32" to 52"/813-1372mm

WEIGHT LIMIT (PER BIKE)

- ▶ Road approved to 65lbs/29.5kg
- ▶ RV approved to 43.5lbs/19.75kg (2")
- ▶ OffRoad rated up to 43.5lbs/19.75 kg

BIKE CAPACITY

- ▶ 2

CONSUMER

- ▶ Core Cyclist

BEST USE CASE

- ▶ Mountain bikes, eMTB
- ▶ Road/Gravel Bike, eRoad
- ▶ Fitness/Hybrid Bikes

TIRE RANGE/WIDTHS

- ▶ Accommodates 16" to 29" up to 4.5" wide

GEAR PROTECTION

- ▶ StrongArm™ hook secures bike at wheels, protecting painted surfaces and carbon frames

LOCKING

- ▶ Integrated SKS locks included to secure bikes to rack and rack to vehicle receiver
- ▶ Built-in lock loop for optional bike security



RampUp-compatible V-shaped trays allow for easy roll-on loading and stow away neatly on the rack.



StadiumSeating™ tiered spine reduces bike-to-bike interference and maximizes ground clearance.



Secures to a 2" hitch receiver with an allen-driven SpeedWedge for a secure, simple installation and removal.



Convenient and ergonomic tilt-activation lever for remote 3-position tilt.

HoldUp™

COMPACT HITCH PLATFORM BIKE RACK

#8002796



Lightweight, compact, and user-friendly, the HoldUp is designed for recreational riders who want to grab their bikes and go. When reliability matters, the HoldUp delivers as your dependable workhorse.

COMPETITIVE EDGE

- ▶ Compact rack with folding wheel cradles for easy storage or vehicle access
- ▶ Intuitive front wheel hook loading and unloading is easy for everyone
- ▶ Fits modern bikes with a large wheelbase range and ebike level weight capacity

HITCH COMPATIBILITY

- ▶ Available in 2"
- ▶ Compatible with the Yakima BackSwing, StraightShot and FlipFlop hitch accessories

WHEELBASE RANGE

- ▶ Accommodates bike wheelbases from 34" to 50"/864-1270mm

WEIGHT LIMIT (PER BIKE)

- ▶ Road approved to 60lbs/27kg
- ▶ RV approved to 40lbs/18kg
- ▶ OffRoad approved up to 40lbs/18kg

BIKE CAPACITY

- ▶ 2

CONSUMER

- ▶ Recreational Cyclist

BEST USE CASE

- ▶ Mountain bikes, eMTB
- ▶ Road/Gravel Bike, eRoad
- ▶ Fitness/Hybrid Bikes

TIRE RANGE/WIDTHS

- ▶ Accommodates 20" to 29" up to 4.8" wide

LOCKING

- ▶ Includes SKS Hitch Lock to secure rack to vehicle receiver
- ▶ Built-in lock loop for optional bike security



▶ Front wheel cradle fits up to 29" wheels, that can fold up for compact storage or vehicle access.



▶ Fit moderns full suspension mountain bikes with large wheelbases and wider tires.



▶ Adjustable offset wheel trays to limit bike to bike interference.



▶ Convenient remote 3-Position tilt drops to allow trunk access with bikes loaded, and folds flat against the car with bikes unloaded.

HoldUp™ +2 Add-On

COMPACT HITCH PLATFORM BIKE RACK ADD ON

#8002797



COMPETITIVE EDGE

- ▶ Adding on the HoldUp+2 lets you double your capacity to four bikes, each carried securely and in style.

MAX WHEEL BASE

- ▶ Accommodates bike wheelbases from 34" to 50"/864-1270mm

TIRE RANGE/WIDTHS

- ▶ Accommodates 20" to 29" up to 4.8" wide

GEAR PROTECTION

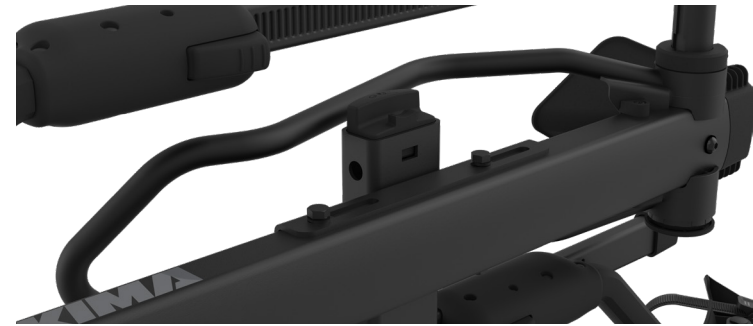
- ▶ StrongArm™ hook secures bike at wheels, protecting painted surfaces and carbon frames

WEIGHT LIMIT (PER BIKE)

- ▶ Road approved to 50lbs/23kg
- ▶ RV approved to 33lbs/15 kg
- ▶ OffRoad rated up to 33lbs/15 kg

LOCKING

- ▶ Built-in lock loop for optional bike security



- ▶ Front wheel cradle fits up to 29" wheels, that can fold up for compact storage or vehicle access.



- ▶ Convenient remote 3-Position tilt drops to allow trunk access with bikes loaded, and folds flat against the car with bikes unloaded.



- ▶ Adjustable offset wheel trays to limit bike to bike interference.

HangTight™ VERTICAL HITCH BIKE RACK

4-BIKE #8002742, 6-BIKE #8002743



INSTALLATION TECHNOLOGY

- ▶ Threaded hitch bolt with lock

GEAR PROTECTION

- ▶ Dual padded cradles stabilize and secure the bike by the handlebar

COMPETITIVE EDGE

- ▶ High capacity in less space behind the vehicle
- ▶ Carries most popular styles of bikes
- ▶ HangTight 4 can be turned into a hitch swing rack with BackSwing accessory
- ▶ Built-in bottle opener

HITCH COMPATIBILITY

- ▶ 2" Only

LOCKING

- ▶ Integrated steel loop for users own lock
- ▶ HitchLock included

WEIGHT LIMIT

- ▶ 70-lbs per bike inner cradles
- ▶ 37.5-lbs per bike outer cradles

BIKE CAPACITY

- ▶ 4 or 6

USER

- ▶ Active family

BEST USE CASE

- ▶ Mountain bikes, road and gravel bikes, youth bikes

TIRE RANGE/WIDTHS

- ▶ 20" - 29", up to 4.8" wide

MAX WHEEL BASE

- ▶ 50"

ACCESSORIES

- ▶ HangTight DH Cradle #8002744
- ▶ BackSwing (HangTight 4 only) #8002483
- ▶ StraightShot (HangTight 4 only) #8002739
- ▶ 9-ft SKS Security Cable #8007233



▶ Integrated steel loop allows the user to bring their own heavy-duty lock to keep their gear safe.



▶ Fully padded cradles fit most bike handle bar styles.



▶ Rotating rear-wheel cups accommodate a wide range of wheelbases.



▶ Foot operated tilt makes it easy to access the rear of the vehicle.

FullSwing™
PREMIUM SWING-AWAY HITCH BIKE RACK
 #8002465



INSTALLATION TECHNOLOGY

- ▶ Tool-free locking SpeedKnob™ and auto pin

GEAR PROTECTION

- ▶ Fully padded arms and ZipStrip™ retention cradles

COMPETITIVE EDGE

- ▶ Rack swings away with bikes loaded for rear of vehicle access
- ▶ Conveniently located UpperHand™ lever tilts arms down
- ▶ Adjustable cradles for precise bike placement and spacing
- ▶ Built-in bottle opener

HITCH COMPATIBILITY

- ▶ 2" Only

LOCKING

- ▶ SpeedKnob and integrated locking bike cable

WEIGHT LIMIT

- ▶ 40-lbs per bike

BIKE CAPACITY

- ▶ 4

BEST USE CASE

- ▶ Any bike with a traditional diamond-shaped frame

ACCESSORIES

- ▶ TubeTop™
- ▶ PlateMate™
- ▶ HitchSki™

USER

- ▶ Active outdoor families
- ▶ Core outdoor



UpperHand™ lever is conveniently located on top of the rack allowing user to tilt the arms down when not in use.



A staple to almost all premium hitch racks, the tool-free locking SpeedKnob™ allows for easy install and removal.



Integrated bike lock cable lends peace of mind to the user; locks all bikes to the rack.



The adjustable cradles firmly hold bikes in place and utilizes proprietary ZipStrip™ retention straps.



**RidgeBack™ 2, 4, and 5
UTILITY MAST HITCH RACK**

2-BIKE #8002457, 4-BIKE #8002458, 5-BIKE #8002459

INSTALLATION TECHNOLOGY

- ▶ Tool-free locking SpeedKnob™ and auto pin

GEAR PROTECTION

- ▶ Padded SuperCush™ cradles with ZipStrip™ retention straps

COMPETITIVE EDGE

- ▶ Rack tilts forward, unloaded, for rear of vehicle access
- ▶ Conveniently located UpperHand™ lever tilts arms down
- ▶ Built-in bottle opener

HITCH COMPATIBILITY

- ▶ Compatible with 2" or 1.25"

LOCKING

- ▶ SpeedKnob locks rack to vehicle

WEIGHT LIMIT

- ▶ 40-lbs per bike

BIKE CAPACITY

- ▶ 2, 4, or 5

BEST USE CASE

- ▶ Any bike with a traditional diamond-shaped frame

ACCESSORIES

- ▶ TubeTop™
- ▶ PlateMate™
- ▶ HitchSki™ (4-bike only)
- ▶ HandCuff™

USER

- ▶ Families who enjoy nature
- ▶ Outdoor Millennial
- ▶ General travel

RV Approved

Tested to stand up to the long miles.



**LongHaul™
PREMIUM 4-BIKE, RV APPROVED MAST HITCH RACK**
#8002476

INSTALLATION TECHNOLOGY

- ▶ Threaded hitch pin

GEAR PROTECTION

- ▶ Padded cradles with ZipStrip™ retention straps

COMPETITIVE EDGE

- ▶ Tested to withstand the physical demands of RV travel
- ▶ Conveniently located lever tilts arms down
- ▶ Built-in bottle opener

HITCH COMPATIBILITY

- ▶ 2" only

LOCKING

- ▶ HitchLock and integrated locking bike cable

WEIGHT LIMIT

- ▶ 37.5-lbs per bike

BIKE CAPACITY

- ▶ 4

BEST USE CASE

- ▶ Any bike with a traditional diamond shaped frame

ACCESSORIES

- ▶ TubeTop™
- ▶ PlateMate™
- ▶ HitchSki™
- ▶ 9-ft SKS Locking Cable

USER

- ▶ Active outdoor families
- ▶ RV owners

Spare Tire

Carry bikes from a rear-mounted spare tire.



**SpareRide™
SPARE TIRE MOUNTED 2-BIKE RACK**
#8002599

INSTALLATION TECHNOLOGY

- ▶ Tool-free locking SpeedKnob™

GEAR PROTECTION

- ▶ Padded SuperCush cradles with ZipStrip™ retention straps

COMPETITIVE EDGE

- ▶ Fits a wide variety of spare tire bolt patterns
- ▶ Built-in bottle opener

VEHICLE COMPATIBILITY

- ▶ Spare tires up to 12.5" wide

LOCKING

- ▶ SpeedKnob and integrated locking bike cable

WEIGHT LIMIT

- ▶ 35-lbs per bike

BIKE CAPACITY

- ▶ 2

BEST USE CASE

- ▶ Any bike with a traditional diamond shaped frame

ACCESSORIES

- ▶ TubeTop™
- ▶ PlateMate™

USER

- ▶ Active outdoor families
- ▶ Jeep owners
- ▶ Core Outdoor

BackSwing™ HITCH RACK SWING ADAPTER

#8002483



INSTALLATION TECHNOLOGY

- ▶ Threaded hitch pin

COMPETITIVE EDGE

- ▶ Allows user to make almost any 2" hitch rack have the ability to swing open 90°
- ▶ Locks in place when fully open
- ▶ Safety latch and pin act as double security to keep things extra secure on the road

HITCH COMPATIBILITY

- ▶ 2" Only

LOCKING

- ▶ HitchLock sold separately

WEIGHT LIMIT

- ▶ 250-lbs

BEST USE CASE

- ▶ Most 2" hitch racks
- ▶ HangOver 4
- ▶ Hitch cargo basket/bin

ACCESSORIES

- ▶ HitchLock

USER

- ▶ Core outdoor
- ▶ Committed Cyclist
- ▶ Current rack owner looking for the swing away feature



▶ The BackSwing's robust design keeps bike racks secure and in place.



▶ Once the BackSwing is fully open, the user will know because it locks into place.



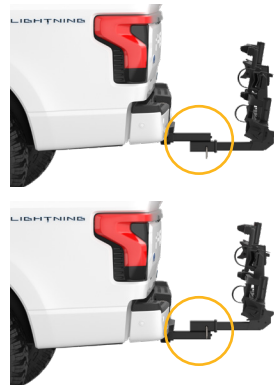
▶ The extra length makes it a great accessory for Jeep owners and other vehicles with rear-mounted spare tires.



▶ The ergonomic handle design is easy to operate and securely locks the BackSwing back into place.

FlipFlop™ HITCH ADAPTER

#8002785



COMPETITIVE EDGE

- ▶ The Yakima FlipFlop hitch extender solves those tricky situations where your hitch is too short or too tall for your Yakima gear mount
- ▶ Offers 2.125" of rise or 2.125" of drop for hitch rack placement
- ▶ HitchLock included for added security
- ▶ Quick and easy installation with hex tool-driven wedge technology
- ▶ Compatible with 2" hitch receivers

2.5" Hitch Adapter™ HITCH ADAPTER

#8002786



COMPETITIVE EDGE

- ▶ Work hard and play hard with the 2.5" to 2" hitch adapter, making 2" hitch products compatible with larger 2.5" truck hitches.
- ▶ Compatible with any Yakima 2" hitch rack for versatile use
- ▶ HitchLock included for added security
- ▶ Easily installs with a threaded hitch bolt for a secure and reliable fit

BookMark™ HITCH ACCESSORY

BLACK #8002787, SILVER #8002788, 12 PACK BLACK/SILVER #8002806



COMPETITIVE EDGE

- ▶ Innovative tool streamlines rack installation by precisely guiding hitch bolt alignment
- ▶ Simple attachment design for effortless installation
- ▶ Pinpoints the ideal hitch bolt position for a smooth, secure fit
- ▶ Available in Black and Silver
- ▶ 2" hitch rack only

Hitch Rack Accessories

Carrying solutions for the hitch.



OnRamp™ FatStraps FAT BIKE WHEEL STRAPS

Increased length of strap to hold fat tires in place on the OnRamp wheel tray.
#8002714



StageTwo™ Fat Bike Kit CONVERTS TRAYS FOR FAT BIKES

Extra-long wheel straps to accommodate fat tires greater than 4.8 inches wide.
#8002735



SafetyMate™ TAIL LIGHT AND LICENSE PLATE KIT

Attaches to StageTwo to provide bright LED tail lights and license plate mount.
#8002738



RampUp™ ADD ON LOADING RAMP

RampUp attaches to StageTwo for easy loading and unloading of bikes.
#8002737



StraightShot™ HITCH RECEIVER EXTENSION

Allows most Yakima® hitch products to clear obstructions like a rear-mounted spare tire.
#8002739



HitchLock™ HITCH PIN LOCK

Attaches to the hitch pin to lock the hitch rack to the receiver.
#8007235



PlateMate™ BIKE RACK LICENSE PLATE MOUNT

Attaches to the last bike loaded or directly to the bike rack, allowing for full visibility of the vehicle's license plate.
#8002713



TubeTop™ BICYCLE TOP TUBE ADAPTER

Creates a straight top-tube on bikes with specialty frames for use on mast-style hitch racks. ie. Women's specific and kids bikes.
#8002531



LockUp 10-FT LOCKING CABLE

Vinyl wrapped steel cable to lock all bikes to a hitch rack.
#8007238



HandCuff KIT TO ADD 'LOCKS BIKES TO RACK'

Upgrade kit to transform a non-locking mast style rack, to one that locks the bikes to the rack.
#8002466

HighRoad™ PREMIUM ROOFTOP WHEEL-ON BIKE MOUNT

#8002139



INSTALLATION TECHNOLOGY

- ▶ Tool-free, low profile BandClamp™ mounts

GEAR PROTECTION

- ▶ Zero frame contact - wheels only

COMPETITIVE EDGE

- ▶ Adjustment free front wheel hoop
- ▶ TorqueRight knob provides a consistent secure bike fit
- ▶ Low profile design that minimizes hatch interference

ROOF RACK COMPATIBILITY

- ▶ Universal roof rack attachment
- ▶ T-Slot mount with accessory

LOCKING

- ▶ Accepts 2 SKS locks: Integrated locking cable and clamp

WEIGHT LIMIT

- ▶ 45-lbs

BIKE CAPACITY

- ▶ 1

BEST USE CASE

- ▶ Mountain bikes
- ▶ Fat bikes
- ▶ Road bikes
- ▶ Lifestyle bikes
- ▶ No Fenders

TIRE RANGE/WIDTHS

- ▶ 26" - 29", 23mm to 4" wide

MAX WHEEL BASE

- ▶ 52.25"

CROSSBAR SPREAD

- ▶ 18" - 40"

USER

- ▶ Committed Cyclist

ACCESSORIES

- ▶ Smart-Slot Kit 1
- ▶ SKS 2 Pack



▶ The adjustment-free wheel hoop folds flat when not in use, becoming discrete and aerodynamic.



▶ The TorqueRight knob allows the user to tighten the bike to the mount securely and hassle-free, SKS lock not included.



▶ Rubber-coated metal banding makes up the BandClamp crossbar-hugging mounting system.



▶ The integrated TailWhip™ allows the user to lock their bike to the rack, SKS Locks not included.

HighSpeed™ PREMIUM ROOFTOP FORK BIKE MOUNT

#8002140



INSTALLATION TECHNOLOGY

- ▶ Tool-free, low profile BandClamp™

GEAR PROTECTION

- ▶ Zero frame contact - fork and wheel only

COMPETITIVE EDGE

- ▶ Seamless thru-axle compatibility
- ▶ TorqueRight knob provides a consistent secure bike fit
- ▶ Low profile design that minimizes hatch interference

ROOF RACK COMPATIBILITY

- ▶ Universal roof rack attachment
- ▶ T-Slot mount with accessory

LOCKING

- ▶ Accepts 2 SKS locks: integrated locking cable and knob

WEIGHT LIMIT

- ▶ 40-lbs

BIKE CAPACITY

- ▶ 1

USER

- ▶ Committed Cyclist

CROSSBAR SPREAD

- ▶ 18" - 37"

BEST USE CASE

- ▶ Mountain bikes
- ▶ Fat bikes
- ▶ Road bikes
- ▶ Lifestyle bikes

TIRE RANGE/WIDTHS

- ▶ 20" - 29", 23mm to 4.8" / 9mm QR and 12-20mm thru-axles

MAX WHEEL BASE

- ▶ 50"

CROSSBAR SPREAD

- ▶ 18" - 42.5"

ACCESSORIES

- ▶ Smart-Slot Kit 1
- ▶ Universal QR Locking Skewer
- ▶ WheelHouse™



- ▶ The bike is held in place by gripping the bikes thru-axle or the provided 9mm skewer. Tightens with the TorqueRight knob.



- ▶ The TorqueRight knob allows the user to tighten the bike to the mount securely and hassle-free. SKS lock not included.



- ▶ Rubber-coated metal banding makes up the BandClamp crossbar-hugging mounting system.



- ▶ The integrated TailWhip™ allows the user to lock their bike to the rack, SKS Locks not included.

Rooftop Bike Mounts

Bike mounts for the top-of-car.



FrontLoader™ ROOFTOP WHEEL-ON BIKE MOUNT #8002103

INSTALLATION TECHNOLOGY

- ▶ Tool-free universal clamping system

GEAR PROTECTION

- ▶ Zero frame contact - wheels only

COMPETITIVE EDGE

- ▶ Fully assembled out of the box
- ▶ Multi-position wheel hoop folds down when not in use

ROOF RACK COMPATIBILITY

- ▶ Universal roof rack attachment

TIRE RANGE/WIDTHS

- ▶ 20" - 29", 23mm to 3" wide

LOCKING

- ▶ Accepts 2 SKS locks: integrated cable and clamp

MAX WHEEL BASE

- ▶ 48"

CROSSBAR SPREAD

- ▶ 18" - 48"

WEIGHT LIMIT

- ▶ 40-lbs

USER

- ▶ Core Outdoor
- ▶ New to rooftop mounts
- ▶ General travel

BIKE CAPACITY

- ▶ 1

BEST USE CASE

- ▶ Mountain bikes
- ▶ Road bikes
- ▶ Kids bikes

ACCESSORIES

- ▶ SKS 2 Pack



ForkLift™ ROOFTOP FORK BIKE MOUNT #8002098

INSTALLATION TECHNOLOGY

- ▶ Tool-free universal clamping system

GEAR PROTECTION

- ▶ Zero frame contact - fork and wheel only

COMPETITIVE EDGE

- ▶ Fully assembled out of the box
- ▶ Passive security system locks bike and mount to roof rack

ROOF RACK COMPATIBILITY

- ▶ Universal roof rack attachment

TIRE RANGE/WIDTHS

- ▶ 20" - 29", 23mm to 3" / 9mm QR axles

LOCKING

- ▶ Accepts 1 SKS lock: locking skewer

MAX WHEEL BASE

- ▶ 48"

CROSSBAR SPREAD

- ▶ 18" - 42"

WEIGHT LIMIT

- ▶ 35-lbs

USER

- ▶ Core Outdoor
- ▶ New to rooftop mounts
- ▶ General travel

BIKE CAPACITY

- ▶ 1

BEST USE CASE

- ▶ Mountain bikes
- ▶ Road bikes
- ▶ Bikes with fenders

ACCESSORIES

- ▶ SKS 2 Pack
- ▶ Thru-Axle Adapters
- ▶ WheelHouse

Trunk Bike Mounts

Bike mounts for trunk.



FullBack™ PREMIUM TRUNK BIKE RACK

Securely holds and locks your bike, is simple to use, stores easily, installs easily, and is easy on the wallet.

2-BIKE #8002634, 3-BIKE #8002633



HangOut™ PRICE POINT TRUNK BIKE RACK

Super simple and built to last.

2-BIKE #8002637, 3-BIKE #8002638

Top of Car and Custom Bike Mount Accessories

Accessories to build a full top-of-car bike mount product line.



WheelHouse™ SINGLE WHEEL ROOF RACK MOUNT

The perfect companion for fork-mounted bike racks.
Carries one wheel on any roof rack crossbar.
#8002108



WheelHouse™ Thru-Axle Skewer WHEELHOUSE ONLY

For bike wheels that use a thru-axel. For use on
WheelHouse™ single wheel mount only.
#8002110



Thru-Axle Fork Adapters SKEWERS FOR FORK MOUNTS

#8002116 Thru-Axle Fork Adapter 12mm X 100
#8002099 Thru-Axle Fork Adapter 15mm X 100
#8002113 Thru-Axle Fork Adapter 15mm X 110



Universal QR Locking Skewer QUICK-RELEASE SKEWER FOR FORK MOUNTS

Locking skewer for use on any Yakima® fork-mounted bike rack.
#8002118



BlockHead™ and Locking BlockHead™ TRUCK BED RAIL BIKE MOUNT

Bed rail permanent fork mount bike rack.
BLOCKHEAD #8001117, LOCKING BLOCKHEAD #8001118



SmarT-Slot™ Kit 1 T-SLOT CROSSBAR ADAPTER

Creates a streamlined low-profile attachment to t-slot
crossbars. For use on HighSpeed™ and HighRoad™.
#8002122

TRUCK RACKS

OVER BED SOLUTIONS



UPDATE

Adjustable MOLLE Panel

OVERHAUL HD ACCESSORY

#8001187



Same high load capacity of the original Yakima MOLLE panels but with adjustable length so customers can customize their fitment to suite their needs.

COMPETITIVE EDGE

- ▶ Allows for crossbar spreads from 40 to 54 inches
- ▶ 80lb load limit

FEATURES

- ▶ Heavy duty aluminum construction with 80lb load limit
- ▶ MOLLE pattern combined with additional slots and holes for maximum flexibility in accessory mounting

WEIGHT LIMIT

- ▶ Road approved to 80lbs/36kg
- ▶ OffRoad rated up to 80lbs/36kg



Allows for crossbar spreads from 40 to 54 inches.



MOLLE pattern combined with additional slots and holes for maximum flexibility in accessory mounting.

OverHaul™ HD

ADJUSTABLE HEAVY-DUTY TRUCK BED RACK

#8001151



For weekend adventurers and weekday grinds, the OverHaul HD adjustable truck rack brings best-in-class payload and unmatched versatility on and off-road.

INSTALLATION TECHNOLOGY

- ▶ Easy on-off placement in minutes with our patent-pending QuickChange™ rack attachment

MOUNTING HARDWARE

- ▶ J-Clamps for standard bedrails
- ▶ Additional kits (or separate kit) is required for tracked beds and select tonneau covers

TRUCK BED COMPATIBILITY

- ▶ Designed and tested for all common truck beds using our BedGrip™ clamp design

COMPETITIVE EDGE

- ▶ 500-lb on-road and 300-lb off-road rating
- ▶ Integrated tie-down points help easily secure any load
- ▶ Fixed height at 13"

LOCKING

- ▶ Includes SKS Locks

CROSSBAR REQUIREMENTS

- ▶ HD Bar - sold separately

BEST USE CASE

- ▶ Overland / Off-road excursions
- ▶ Rooftop tent foundation

USER

- ▶ Pick-up truck owner / Overlander



Aluminum construction and powder-coat finish for a lifetime of DIY projects and weekend adventures.



Integrated loops for easy tie-down points are located in multiple places across all four rack towers.



Adjustable height for a variety of use cases; capable of extending up to 30".



Tie-down loops also feature a built-in bottle opener.

OutPost™ HD

FIXED HEIGHT HEAVY-DUTY TRUCK BED RACK

#8001152



Designed to handle heavy loads on backcountry terrain, the OutPost HD is built for rugged overland explorers.

INSTALLATION TECHNOLOGY

- ▶ Easy on-off placement in minutes with our patent-pending QuickChange™ rack attachment

MOUNTING HARDWARE

- ▶ J-Clamps for standard bedrails
- ▶ Additional kits (or separate kit) is required for tracked beds and select tonneau covers

TRUCK BED COMPATIBILITY

- ▶ Designed and tested for all common truck beds using our BedGrip™ clamp design

COMPETITIVE EDGE

- ▶ 500-lb on-road and 300-lb off-road rating
- ▶ Integrated tie-down points help easily secure any load
- ▶ Fixed height at 13"

LOCKING

- ▶ Includes SKS Locks

CROSSBAR REQUIREMENTS

- ▶ HD Bar - sold separately

BEST USE CASE

- ▶ Overland / Off-road excursions
- ▶ Rooftop tent foundation

USER

- ▶ Pick-up truck owner / Overlander



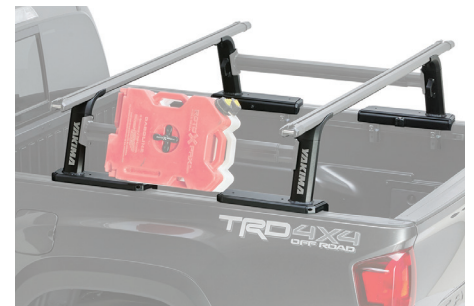
Designed at a fixed height of 13" for off-road friendly weight distribution.



The low center of gravity makes the OutPost HD a stellar option for mounting the SkyRise HD tent.



Integrated loops for easy tie-down points are located in multiple places across all four rack towers.



OutPost HD is totally customizable to the consumers' needs with an entire line-up of accessories.

BedRock™ HD

LOW PROFILE HEAVY-DUTY TRUCK BED RACK

#8001160



Sleek and strong, the BedRock HD's low-profile design allows the use of any universal gear mount while preserving valuable bed space.

INSTALLATION TECHNOLOGY

- ▶ Simple, tool-free clamping attachment

MOUNTING HARDWARE

- ▶ N/A

TRUCK BED COMPATIBILITY

- ▶ All truck beds

COMPETITIVE EDGE

- ▶ 300-lb on-road and 180-lb off-road rating
- ▶ Maintains a low-profile at bed rail height

LOCKING

- ▶ Includes SKS Locks

CROSSBAR REQUIREMENTS

- ▶ HD Bar - sold separately

BEST USE CASE

- ▶ Rooftop tent foundation
- ▶ Multi-single bike mounts
- ▶ Allows access to bed

USER

- ▶ Pick-up truck owner



Durable aluminum construction powder-coated for strength.



Four towers install to truck beds for adding racks.



Low-profile and is easy to rack out and reach gear.



Easily attaches and locks to all style truck beds.

HD Bar

HEAVY-DUTY TRUCK RACK CROSSBAR

#VARIES MD, LG, XL



HD Bar is the necessary bar for all of our truck racks. Heavy-duty and ready to carry whatever you throw at it.

COMPETITIVE EDGE

- ▶ Aluminum construction with rigid design and T-Slot infill
- ▶ End caps feature built in tie-down points

ROOF RACK TOWER COMPATIBILITY

- ▶ Necessary for all truck racks:
OverHaul™ HD, OutPost™ HD,
and BedRock™ HD

WEIGHT LIMIT

- ▶ Up to 220lbs

CONSUMER

- ▶ Core Outdoor
- ▶ Overland
- ▶ Sportsman

AVAILABILITY

- ▶ Medium - 60"
- ▶ Large - 68"
- ▶ X-Large - 78"



Integrated tie-down points on endcaps make it easy to secure gear



Low-profile and is easy to rack out and reach gear.

DeepSpace™ 10 TRUCK STORAGE BOX

#8001171



Built to maximize your cargo carrying capacity while accommodating whatever gear you throw at it.

INSTALLATION TECHNOLOGY

- ▶ Universal tool-free mounting hardware

TRUCK/ROOF RACK COMPATIBILITY

- ▶ Universal roof rack attachment
- ▶ Requires a set of truck bed mounted crossbars
- ▶ Also works on vehicle crossbars or equivalent trailer mounted crossbars

COMPETITIVE EDGE

- ▶ No assembly required
- ▶ Wide-angle opening allows for easy loading/unloading
- ▶ Lightweight ABS material and rugged MicroGrain™ texture
- ▶ Made in the USA

LOCKING

- ▶ Includes SKS Lock

WEIGHT LIMIT

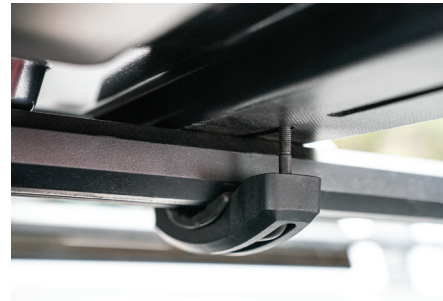
- ▶ 100-lb load rating

GEAR CAPACITY

- ▶ 10 cubic feet

ACCESSORY

DeepSpace 10 conveniently fits up to 4 EXO GearTotes
#8002719



Hassle-free and easy-to-install universal mounting hardware is hidden inside of the box.



Included SKS Lock keeps gear inside and DeepSpace 10 locked on the rack.



The wide opening and lid supports allow for easy loading and unloading of gear.

Works With EXO GearTotes



EXO GearTotes COLLAPSIBLE ORGANIZATION TOTES

4 GearTotes fit perfectly into the DeepSpace 10.
#8002719

Truck Bed Extender

For extra long loads like kayaks, boats, and lumber.



LongArm™ TRUCK BED EXTENDER

#8001149

INSTALLATION TECHNOLOGY

- ▶ Threaded hitch bolt

GEAR PROTECTION

- ▶ LongArm foam pad sold separately

COMPETITIVE EDGE

- ▶ 4 feet of additional truck bed length with a 60" wide crossbar
- ▶ Aluminum construction engineered for strength
- ▶ Adjusts vertically and to multiple angles for various loads
- ▶ Built-in tie-downs and bottle openers on crossbar ends



LongArm Height Extension TRUCK BED EXTENDER EXTENSION

Allows the user to extend the LongArm vertically to perch long loads over the truck cab. Weight limit 165-lbs.

#8001150



LongArm Pad BED EXTENDER CROSSBAR PAD

Designed specifically for use with the LongArm truck bed extender, it protects gear such as the hull of a boat.

#8007417

Truck Rack Accessories

Accessories to build a full overland adventure space.



OverHaul™ MOLLE Panel SIDE PANEL FOR OVERHAUL HD

Powder-coated aluminum sidebars with t-slot channels for attaching gear to.
SHORT #8001178, MID #8001179

COMPETITIVE EDGE

- ▶ Up to 75 lbs of accessories and gear can be mounted to panel using MOLLE style grid system

SIZES

- ▶ Short - 40" between crossbars
- ▶ Mid - 54" between crossbars
- ▶ Sold as a single panel



SideBar™ GEAR MOUNT ACCESSORY FOR TRUCK RACKS

Powder-coated aluminum sidebars with t-slot channels for attaching gear to.
SIDE BAR, SHORT BED (SET OF 2) #8001153
SIDE BAR, LONG BED (SET OF 2) #8001154

ACCESSORY COMPATIBILITY

- ▶ Recovery Track Mount
- ▶ Rotopax Mounting Kit
- ▶ EyeBolts™
- ▶ TopGrip™

INSTALLATION TECHNOLOGY

- ▶ Bolts into pre-threaded holes on OverHaul™ HD and OutPost™ HD truck bed racks

Truck Rack Custom Installation Parts

Accessories to build a full overland adventure space.



HD Track CUSTOM TRUCK SOLUTION

54" TRACK WITH CAPNUTS #8001631
60" TRACK WITH CAPNUTS #8001632
72" TRACK WITH CAPNUTS #8001633

Allows OverHaul™ HD, OutPost™ HD, SkyLine™ towers, and HD Bars to be installed on HD Tracks. Perfect for overlanding trailers, truck bed rails, and custom applications.

INSTALLATION TECHNOLOGY

- ▶ CapNuts

LOAD LIMIT

- ▶ 500lb (dependent)



DiamondBack® Base Track CUSTOM TRUCK SOLUTION

HD Track kit specifically for DiamondBack tonneau covers. Allows SkyLine™ and HD Bars or OverHaul™ HD or OutPost™ HD to be mounted on Diamondback covers.
#8001634



Bed Track Kit 2 (HD Track) TRACK MOUNTING HARDWARE

Allows OverHaul™ HD or OutPost™ HD to be installed on HD Tracks.
#8001172



OverHaul HD Tonneau Set COMPLETE ADJUSTABLE RACK SYSTEM

A complete kit for customers looking to purchase the OverHaul HD, and already have a Tonneau cover. This is the all-in-one solution.

#8001170



Bed Track Kit 1 (Toyota/Nissan) TRACK MOUNTING HARDWARE

Allows attachment of Overhaul HD and Outpost HD to Nissan and Toyota trucks with factory-installed tracks.

#8001168



Tonneau Kit 1 TONNEAU COVER MOUNTING HARDWARE

Specialty mounting hardware for use with OverHaul HD and OutPost HD on trucks with certain tonneau covers.

#8001155

Truck Rack Accessories

Accessories to build a complete heavy-duty truck lineup.



Ladder Roller T-SLOT GEAR MOUNT

Mounts into t-slot channel crossbars such as HD Bar, LockNLoad™, or other t-slot receivers, to assist in loading long loads like ladders and lumber.

#8001163



TopGrip™ T-SLOT PADDLE CARRIER

Attach it to any Yakima® crossbar or our ShowDown™ mount and secure your paddle in the padded clamps. Works for axes, shovels, or other long items too.

#8004086



Recovery Track Mount CARRIES 1 SET OF RECOVERY TRACKS

Easy to install and use, this mount is designed to work with LockNLoad as well as our Truck collection's HD Bars and SideBar™—along with most other T-slot crossbars. Carries one set.

#8001164



Rotopax Mount T-SLOT ROTOPAX MOUNT

Specifically designed for t-slot attachment to carry up to 40 lbs. of Rotopax™ water and fuel packs on LockNLoad or SideBar.

#8001167



LoadStop T-SLOT LOAD STOPPING TIE-DOWNS

Installs tool-free to any t-slot channel and features a tie-down point on top. They are made of sturdy steel with a durable black-zinc coating.

#8001161 SET OF 4



EyeBolts T-SLOT TIE-DOWN POINTS

Installs tool-free to any t-slot and creates instant tie-down points for securing gear.

#8001162 SET OF 2



HD Hook Straps HOOK AND PADDED BUCKLE

A handy addition to any toolbox, HD Hook Straps feature a clipping hook and padded buckle with a 250 lb load rating per strap.

#8001165 SET OF 2



Heavy Duty Straps EXTRA-STRONG TIE-DOWNS

Nylon straps with heavy-duty rubber-covered cinching clasps.

#8005006

CAMP

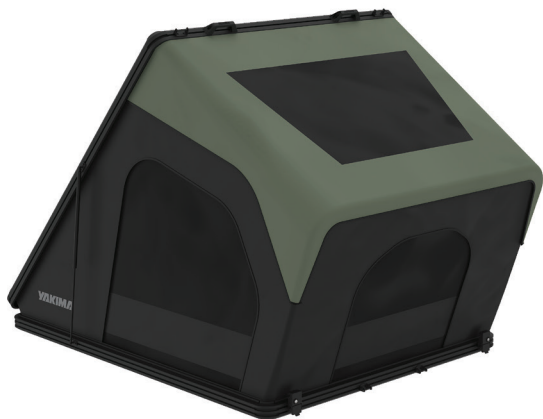
EXPLORATION SOLUTIONS



SkyPeak™ HD

PREMIUM HARDSHELL ROOFTOP TENT

#8007512



Dive into a world where backcountry camping gets a luxurious twist. The SkyPeak HD Hardshell Rooftop Tent isn't just any tent; it's a realm of endless possibilities.

COMPETITIVE EDGE

- ▶ 4-season, waterproof, balanced breathability with weather resistance
- ▶ Interior electronic and gear organization pockets
- ▶ Access doors on 3 sides, designed for all weather conditions and privacy
- ▶ Dual zippered passthrough slots for climate control, power or other accessories
- ▶ Includes pass-through port in floor and hardware for solar power cable routing
- ▶ Dimmable USB-A powered white and amber interior lights
- ▶ Quick to deploy clamshell wedge with expansion pop out for additional interior space
- ▶ Integrated tent-side T-slots for gear attachment up to 75 lbs each side
- ▶ Collapsible ladder with extra wide "barefoot friendly" ergonomic angled steps
- ▶ Compatible with SkyPeak HD Crossbar Kit (sold separately)

TENT ACCESSORY CAPACITY

- ▶ Carry additional gear and equipment on the side mounting slots or accessory crossbar kit (up to 300 lbs, depending on vehicle rack rating)

SLEEPING CAPACITY

- ▶ Sleeps 2-3

LOCKING

- ▶ Secure and lockable low profile tent clamps and lid latching (SKS locking), lock cores included

BEST USE CASE

- ▶ Overlanding rig
- ▶ 4-season camping

CONSUMER

- ▶ Rugged Adventurer
- ▶ Core Outdoor

DIMENSIONS

- ▶ Exterior: 85" L x 58" W x 6.5" H
- ▶ Interior: 81.5" L x 55" W
- ▶ Peak Height: 67.5"
- ▶ Weight: 180 lbs/82 kg



Ready for shouldering up to 300 lbs of your adventure essentials.



Large skylight zippered mesh window with zippered waterproof fabric cover.



Collapsible ladder with extra wide "barefoot friendly" ergonomic angled steps.



Premium memory foam mattress with removable cover & anti-condensation mat.

SkyPeak™ HD Annex HARDSHELL ROOFTOP TENT ACCESSORY

#8007514



COMPETITIVE EDGE

- ▶ Add a spacious room underneath the SkyPeak HD tent, for a changing room or shelter with protected ladder coverage
- ▶ 3 zippered mesh doors with zippered waterproof fabric covers
- ▶ Height-adjustable skirt based on vehicle height and use environment
- ▶ Interior and exterior gear attachment loops for hanging camp accessories and lighting
- ▶ Included ground stakes and storage bag

SkyPeak™ HD Tent Clamp Set HARDSHELL ROOFTOP TENT ACCESSORY

#8005072



COMPETITIVE EDGE

- ▶ Extra set of clamps for a 3 crossbar installation increasing gear load rating of tent by 110 lbs
- ▶ Mounting hardware included

SkyPeak™ HD Crossbar Kit HARDSHELL ROOFTOP TENT ACCESSORY

#8007513



COMPETITIVE EDGE

- ▶ Includes custom towers and Yakima HD Bar crossbars
- ▶ Add up to 165 lbs to the top of your SkyPeak HD tent (within the vehicle rack capacity)
- ▶ Perfect for bikes, kayaks, RoadShower, lights, solar panels, and more - no outdoor essential left behind
- ▶ Up to 165 lbs closed tent load capacity
- ▶ Up to 75 lbs open tent load capacity

SkyPeak™ HD RoadShower/Awning Bracket HARDSHELL ROOFTOP TENT ACCESSORY

#8005071



COMPETITIVE EDGE

- ▶ SkyPeak HD side mount bracket for any Yakima awning or 4G RoadShower
- ▶ Lightweight, aluminum construction with durable, powder-coated finish
- ▶ Includes all mounting hardware (awnings and RoadShower are sold separately)

OverNOut™ 180 EASY-TO-USE FREESTANDING AWNING

#8007516



COMPETITIVE EDGE

- ▶ New easier deployment when compared to traditional awnings with added coverage and surface area
- ▶ Side deploy awning for vehicles with a rear hatch
- ▶ 420D poly-cotton fabric with PU coating is light, durable and waterproof
- ▶ Supplemental support legs and guy lines included
- ▶ Provides 94 square feet of sun and weather protection
- ▶ Includes T-slot L bracket for easy attachment to Yakima HD Bar, JetStream™, LockNLoad Platform and other standard T-slot crossbars

PRODUCT WEIGHT

- ▶ 46 lbs/21 kg

DIMENSIONS

- ▶ 89" L x 9" W x 7" H

CONSUMER

- ▶ Rugged Adventurer
- ▶ Traditional Outdoorsman
- ▶ Ramblin' Family

OverNOut™ 180 Full Wall Kit AWNING ACCESSORY

#8007517



COMPETITIVE EDGE

- ▶ Wall zips onto any section of awning, for added protection from the sun or inclement weather
- ▶ 300D poly-cotton fabric with PU coating is light, durable and waterproof
- ▶ A complete set of wall panels

Adjustable Awning Bracket™ AWNING ACCESSORY

#8005098



COMPETITIVE EDGE

- ▶ Need some space? Adjustable awning bracket lets you raise or lower your shade to accommodate more on your bars
- ▶ Compatible with all Yakima awnings
- ▶ Provides 95mm of adjustment
- ▶ T-slot attachment hardware included

OverNOut™ 270 XL EASY-TO-USE FREESTANDING AWNING

LH #8007524, RH #8007525



OverNOut™ 270 XL Full Wall Kit AWNING ACCESSORY

LH #8007526, RH #8007527

COMPETITIVE EDGE

- ▶ Increased surface area with forward and rear pivot arms for larger coverage of the side and rear of the vehicle
- ▶ Provides 132 square feet of sun and weather protection
- ▶ Supplemental support legs and guy lines included
- ▶ 420D poly-cotton fabric with PU coating is light, durable and waterproof
- ▶ Includes T-slot bracket for easy attachment to Yakima HD Bar, JetStream™, LockNLoad Platform and other standard t-slot crossbars

PRODUCT WEIGHT

- ▶ 60 lbs/27 kg

DIMENSIONS

- ▶ 91" L x 9" W x 9" H

CONSUMER

- ▶ Rugged Adventurer
- ▶ Traditional Outdoorsman



COMPETITIVE EDGE

- ▶ Wall zips onto awning edges for added weather protection and privacy
- ▶ 300D poly-cotton fabric with PU coating is light, durable and waterproof
- ▶ Complete set of walls

OverNOut™ 270 LG Single Wall Kit

OVERNOUT ACCESSORY WALL

#8007464



COMPETITIVE EDGE

- ▶ Heavy-duty strength
- ▶ Customizable privacy and element protection

BEST USE CASE

- ▶ Trailgating
- ▶ Sun protection
- ▶ Light rain
- ▶ Sporting events / tailgating

AWNING FABRIC

- ▶ 420D poly-cotton with waterproof PU coating

USER

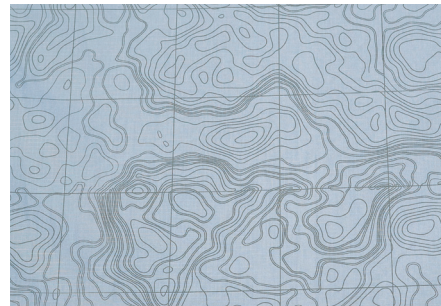
- ▶ Overland
- ▶ Core Outdoor
- ▶ Outdoor adventure families



▶ Wall zips onto any section of awning, for added protection from the sun or inclement weather.



▶ 420D poly-cotton fabric with PU coating is light, durable and waterproof.



▶ Yakima topo pattern.



▶ Includes 2 support legs to raise wall to act as extended coverage.

OverNOout™ ROOFTOP AWNING

SM #8007444, MD #8007445



INSTALLATION TECHNOLOGY

- ▶ Tool-free SpinVice™ clamp

COMPETITIVE EDGE

- ▶ Provides sun and weather protection
- ▶ Rolls into a compact case when not in use, allowing more space for more gear mounts

ROOF RACK COMPATIBILITY

- ▶ Universal roof rack attachment

LOCKING

- ▶ Locks to roof rack

BEST USE CASE

- ▶ Trailgating
- ▶ Sun protection
- ▶ Light rain
- ▶ Light snow
- ▶ Sporting events / tailgating

PRODUCT WEIGHT

- ▶ Varies

AWNING FABRIC

- ▶ 420D Polyester with waterproof PU coating

USER

- ▶ Overland
- ▶ Core Outdoor
- ▶ Outdoor adventure families
- ▶ Nuclear family

AVAILABILITY

- ▶ OverNOout SM #8007444
4.5' X 6.5'
- ▶ OverNOout MD #8007445
6.5' X 6.5'



Rolls up into a self contained, heavy-duty case, only taking up 6.5 inches wide on the roof rack.



The tool-free SpinVice™ clamp system makes installing and removing the OverNOout, a day in the shade.



Unique fabric design featuring a topographical map graphic with Easter egg coordinates.



Awning T-Slot Bracket AWNING MOUNTING BRACKET

Dedicated bracket to mount Yakima® OverNOout SM and MD awnings on T-slot crossbars and LockNLoad Platforms. #8004113

SkyRise™ HD PREMIUM 4-SEASON ROOFTOP TENT

#8007534



COMPETITIVE EDGE

- ▶ Extended canopy for additional weather protection & privacy
- ▶ Extra-wide, sculpted ladder steps for barefoot comfort
- ▶ New tent clamps designed by the experts in roof racks
- ▶ Super durable 600D main fabric and deluxe interior organization for long trips

ROOF RACK COMPATIBILITY

- ▶ Universal locking clamps provide low profile attachment

LOAD CAPACITY

- ▶ 600 lbs

SLEEPING CAPACITY

- ▶ 3 People

BEST USE CASE

- ▶ 4-Seasons

PRODUCT WEIGHT

- ▶ 130 lbs / 59 kg

RAINFLY

- ▶ Waterproof 210D ripstop poly

TENT BODY

- ▶ Waterproof 600D ripstop poly

USER

- ▶ Overland
- ▶ Core Outdoor
- ▶ Outdoor adventure families

SkyRise™ HD Annex SOFTSHELL TENT ANNEX

#8007536 (SOLD SEPARATELY)



Add an extra spacious room underneath the Skyrise HD tent with protected ladder coverage.



Expansion pop out for covered ladder access pairs perfectly with our SkyRise HD Annex (sold separately).



SkyRise HD folds up in a clamshell-style and is protected when traveling with the heavy-duty ToughCover™.



Durable 600D ripstop polyester main fabric and removable 210D ripstop polyester rainfly.



Interior pockets keep small items organized and out of the way when sleeping.

SkyRise™ SL LIGHTWEIGHT ROOFTOP TENT

#8007535



COMPETITIVE EDGE

- ▶ Lightweight, easy to install and deploy
- ▶ Extra-wide, sculpted ladder steps for barefoot comfort
- ▶ New tent clamps designed by the experts in roof racks

ROOF RACK COMPATIBILITY

- ▶ Universal locking clamps provide low profile attachment

LOAD CAPACITY

- ▶ 600 lbs

SLEEPING CAPACITY

- ▶ 3 People

BEST USE CASE

- ▶ 4-Seasons

PRODUCT WEIGHT

- ▶ 119 lbs / 54 kg

RAINFLY

- ▶ Waterproof 210D ripstop poly

TENT BODY

- ▶ Waterproof 210D ripstop poly

USER

- ▶ Core Outdoor
- ▶ Outdoor Millennial
- ▶ Outdoor adventure families

SkyRise™ SL Annex SOFTSHELL TENT ANNEX

#8007537 (SOLD SEPARATELY)



Add a spacious room underneath the SkyRise SL tent, for a changing room or shelter.



Removable rainfly features large windows and 210 Ripstop Polyester, 3000mm PU waterproof coating.



SkyRise SL folds up in a clamshell-style and is protected when traveling with the heavy-duty ToughCover™.



The perimeter is lined with channels that act as a connection point for accessories.



Interior space allows for three people and features a built-in 2.5-inch foam mattress.

SkyRise™ Rooftop Tent Accessories

Accessories to build a full base camp product line.



SideKick™ SKYRISE BOOT BAG

For use with any Yakima® SkyRise™ tent. Slides into the tent's floor channel for secure attachment.

#8007423



SkyHooks™ CARABINER CLIPS

For use with any Yakima® SkyRise tent. Slides into the tent's floor channel for secure attachment.

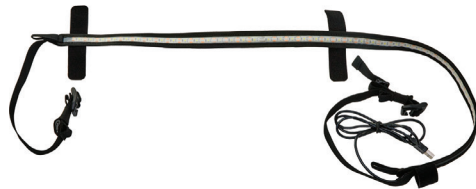
#8007425 SET OF 4



SkyLoft™ INTERIOR OR EXTERIOR GEAR NET

Mesh net with one large zippered partition. Use inside the tent or outside underneath the tent floor.

#8007424



SunBelt™ INTERIOR / EXTERIOR LIGHT STRIP

Flexible LED lights that are powered by user's own battery. Connects to a battery pack with included USB cable.

#8007426

EXO OpenRange™ Deluxe EXO SYSTEM CAMP KITCHEN BUNDLE

#8007540



BEST USE CASE

Great for tailgating or day trips. The unit opens into a fully functional work station to prep, cook, and serve from the vehicle hitch.

INSTALLATION TECHNOLOGY

- ▶ EXO Cleat - Requires EXO SwingBase™ or EXO TopShelf™

GEAR PROTECTION

- ▶ Keeps your gear fully protected from weather, dust, and critters

COMPETITIVE EDGE

- ▶ 85 liters of internal volume
- ▶ Ruggedize roto-molded enclosure
- ▶ Multiple Side Table height option

LOCKING

- ▶ SKS locking latches

INCLUDES

- ▶ Lantern Hook
- ▶ Utensil Drawer
- ▶ Backboard Organizer
- ▶ Collapsible Washbasin
- ▶ Drain Hose
- ▶ Wood Side Table
- ▶ Cutting Board
- ▶ Metal Side Table
- ▶ Leg Kit

USER

- ▶ Core Outdoor
- ▶ Active Family

Outdoor Kitchen System

Bring the comforts of a home kitchen to the outdoors.



The single unit design allows for organizing and transporting cooking gear. It easily opens into a fully functional work station, making it easy to prep, cook, and serve from the same spot.



EXO OpenRange seamlessly attaches to the EXO System for easy transport, and can be deployed into kitchen mode right from your vehicle, or can be relocated to a table or Leg Kit for stand-alone use.

RoadShower™

PRESSURIZED ROOFTOP WATER STORAGE

4G #8004109, 7G #8004110, 10G #8004111



INSTALLATION TECHNOLOGY

- ▶ U-Bolt clamps

COMPETITIVE EDGE

- ▶ Pressurized water storage
- ▶ Easy fill cap
- ▶ Aluminum construction and powder-coat finish

ROOF RACK COMPATIBILITY

- ▶ Universal roof rack attachment

LOCKING

- ▶ Comes with Accessory Lock Housing, SKS Locks, and keys

FILLED WEIGHT

- ▶ 53 lbs, 84 lbs, 120 lbs

WATER CAPACITY

- ▶ 4, 7, and 10 gallons

BEST USE CASE

- ▶ Off the grid adventures
- ▶ Families
- ▶ Beach/Surf

USER

- ▶ Overland
- ▶ Core Outdoor

ACCESSORIES

- ▶ On-Off Elbow #8004103
- ▶ FlexHead Shower MD (19") #8004104
- ▶ FlexHead Shower LG (30") #8004105

REPLACEMENT PARTS

- ▶ Hose
- ▶ U-Bolt Clamps
- ▶ Spray Nozzle
- ▶ Fill Cap



After filling the tank through the large opening, pressurize the tank through the Schrader air valve.



Included garden hose adapter harnesses the pressure of your home water spout and fills and pressurizes at the same time. A stick-on thermometer is also included.



Includes two outlet water ports, one on each end, for convenient water access and shower attachment. FlexHead Shower attachment sold separately.



EXO RoadShower Kit

EXO ADAPTER FOR ROADSHOWER

Allows installation of RoadShower 4G or 7G on to your EXO System.

#8004112

CARGO

CARRYING SOLUTIONS



SkyBox™ NX Collection

MODERN CARGO BOX FOR ALL

SKYBOX NX SKINNY #8007368, SKYBOX NX LG #8007369,
SKYBOX NX XL #8007370, SKYBOX NX XXL #8007371



COMPETITIVE EDGE

- ▶ Full metal opening handle is easy to use and locks gear inside the box and the box to the vehicle
- ▶ Dual-sided opening for easy access on either side of your vehicle

INSTALLATION TECHNOLOGY

- ▶ Removable torque tool mounting hardware leaves you with more usable cargo space.

LOCKING

- ▶ SKS Locks included for added security

ROOF RACK COMPATIBILITY

- ▶ Universal mounting hardware fits all Yakima StreamLine™ crossbars and factory or aerodynamic crossbars

WEIGHT LIMIT

- ▶ 165-lbs (cargo box + contents)

CONSUMER

- ▶ Core Outdoor
- ▶ Ramblin' Family
- ▶ General Travel

AVAILABILITY

- ▶ 12-Cubic Feet
- ▶ 16-Cubic Feet
- ▶ 18-Cubic Feet
- ▶ 22-Cubic Feet



Full metal opening handle is easy to use and locks gear inside the box and the box to the vehicle.



Market-leading internal usable space with an unobstructed flattened floor provides more space for your gear.



Optimized hatch clearance for better vehicle fit.



Removable torque limiting knob ensures a safe and secure installation.

SkyBox™ NX Collection

Modern cargo box for all.



SkyBox NX Skinny MODERN CARGO BOX FOR ALL

#8007368

BEST USE CASE

- ▶ Hauls gear for up to 3 campers; fits snowboards and skis up to 195 cm

DIMENSIONS

- ▶ 84" x 26.5" x 16"
- ▶ 213cm X 67cm X 102cm

CAPACITY

- ▶ 12 Cubic Feet

MAX SKI LENGTH

- ▶ 195cm



SkyBox NX LG MODERN CARGO BOX FOR ALL

#8007369

BEST USE CASE

- ▶ Weekend trips to the beach, cabin, or the mountain for 2-3 people and Fido.

DIMENSIONS

- ▶ 75.5" x 35" x 17"
- ▶ 192cm X 89cm X 40cm

CAPACITY

- ▶ 16 Cubic Feet

MAX SKI LENGTH

- ▶ 175cm



SkyBox NX XL MODERN CARGO BOX FOR ALL

#8007370

BEST USE CASE

- ▶ Family road tripping and multi-destination camping trips for 3-4 people.

DIMENSIONS

- ▶ 84" X 36" X 17"
- ▶ 213cm X 91cm X 42cm

CAPACITY

- ▶ 18 Cubic Feet

MAX SKI LENGTH

- ▶ 195cm



SkyBox NX XXL MODERN CARGO BOX FOR ALL

#8007371

BEST USE CASE

- ▶ Hauls gear for up to 5 campers; fits snowboards and skis up to 215 cm

DIMENSIONS

- ▶ 90.5" x 36" x 19"
- ▶ 230cm X 91cm X 48cm

CAPACITY

- ▶ 22 Cubic Feet

MAX SKI LENGTH

- ▶ 215cm



SkyBox NX 16 Cargo Liner CARGO ACCESSORY

Molded cargo box floor liner for added gear protection and makes for easy cleanup.

#8007505



SkyBox NX 18 Cargo Liner CARGO ACCESSORY

Molded cargo box floor liner for added gear protection and makes for easy cleanup.

#8007506



SmarT-Slot Kit 6 CARGO BOX T-SLOT KIT

T-Slot adapter for SkyBox NX, GrandTour and CBX cargo boxes.

#8007504

CBX™ Collection PREMIUM CARGO BOX

CBX LG #8007518, CBX XXL #8007519



WHAT'S NEW

- ▶ New automotive shiny finish on a proven winner

COMPETITIVE EDGE

- ▶ Rugged angular and reflective finish stands out from the crowd
- ▶ Black chrome badging
- ▶ Dual-sided opening for easy access on either side of your vehicle

INSTALLATION TECHNOLOGY

- ▶ Removable torque tool mounting hardware leaves you with more usable cargo space.

LOCKING

- ▶ SKS Locks included for added security

ROOF RACK COMPATIBILITY

- ▶ Universal mounting hardware fits all Yakima StreamLine™ crossbars and factory or aerodynamic crossbars

WEIGHT LIMIT

- ▶ 165-lbs (cargo box + contents)

CONSUMER

- ▶ Core Outdoor
- ▶ Ramblin' Family
- ▶ General Travel

AVAILABILITY

- ▶ 16-Cubic Feet
- ▶ 21.5-Cubic Feet



▶ Intuitive and easy to grab lid handle locks gear inside the box and the box to the vehicle.



▶ Premium automotive finish and style for a high-end look.



▶ Removable torque limiting knob ensures a safe and secure installation.



▶ Optimized hatch clearance for better vehicle fit.

CBX™ Collection

Premium rugged cargo box family.



CBX LG **PREMIUM CARGO BOX** #8007518

BEST USE CASE

- Hauls gear for up to 3 campers; fits snowboards and skis up to 185cm

DIMENSIONS

- 83" X 38" X 15"
- 211cm X 96.5cm X 38cm

CAPACITY

- 16 Cubic Feet

MAX SKI LENGTH

- 185cm

CONSUMER:

- Core Outdoor
- Ramblin' Family
- General Travel



CBX XXL **PREMIUM CARGO BOX** #8007519

BEST USE CASE

- Hauls gear for up to 5 campers; fits snowboards and skis up to 215cm

DIMENSIONS

- 91" X 38" X 17"
- 231cm X 96.5cm X 43cm

CAPACITY

- 21.5 Cubic Feet

MAX SKI LENGTH

- 215cm

CONSUMER:

- Core Outdoor
- Ramblin' Family
- General Travel

GrandTour™ Lo PREMIUM CARGO BOX

#8007398



INSTALLATION TECHNOLOGY

- ▶ Removable torque tool with audible installation guide
- ▶ Installs easily with universal fitting rubber-coated metal claw

GEAR PROTECTION

- ▶ Keeps gear out of the elements and out-of-view

COMPETITIVE EDGE

- ▶ Market-leading hatch clearance
- ▶ Upgraded installation with easy to use, removable torque knob allows for flattened interior for maximum usable space
- ▶ High-end automotive finish and chrome badging
- ▶ Metal SuperLatch™ entry handle
- ▶ Dual-sided opening

ROOF RACK COMPATIBILITY

- ▶ Universal roof rack attachment

LOCKING & ACCESSIBILITY

- ▶ 2 SKS Locks on either side

WEIGHT LIMIT

- ▶ 165-lbs (cargo box + contents)

CONSUMER

- ▶ Core Outdoor
- ▶ General Traveler who seeks a high-end aesthetic

DIMENSIONS

- ▶ 91" x 37" x 10"
- ▶ 231 x 94 x 25cm

CAPACITY

- ▶ 15-Cubic Feet, Low Profile



Rubber-coated metal clamp secures box to the roof racks crossbars with the simple twist of the torque tool.



SuperLatch™ metal handle with integrated locks are tried and true and easy to use.



Torque tool is thoughtfully designed with audible clicks when fully installed. Stows away in a dedicated interior socket.



The removable torque tool allows for a flat interior surface making loading easier and maximizes capacity.

RocketBox™ Pro 14
PRICE-POINT ROOFTOP CARGO BOX
 ROCKETBOX PRO 14 #8007192



INSTALLATION TECHNOLOGY

- ▶ Tool-free twist knob

GEAR PROTECTION

- ▶ Keeps gear out of the elements and out-of-view

COMPETITIVE EDGE

- ▶ Dual-sided opening at an entry-level price point

ROOF RACK COMPATIBILITY

- ▶ Universal roof rack attachment

CAPACITY

- ▶ 14 Cubic Feet

LOCKING & ACCESSIBILITY

- ▶ 2 SKS Locks on either side

DIMENSIONS

- ▶ 74" x 33" x 16"
- ▶ 188 x 84 x 40cm

WEIGHT LIMIT

- ▶ 165-lbs (cargo box + contents)

MAX SKI LENGTH

- ▶ 170cm

CONSUMER

- ▶ Entry-level cargo box consumer with budget restrictions
- ▶ Outdoor Millennial
- ▶ General Travel / Family that likes to get outside



Easy to use push button opening with integrated SKS locks on either side of the boxes.



Universal clamping hardware fits just about every crossbar style.



Features a dual-sided opening for access on either side of the vehicle.

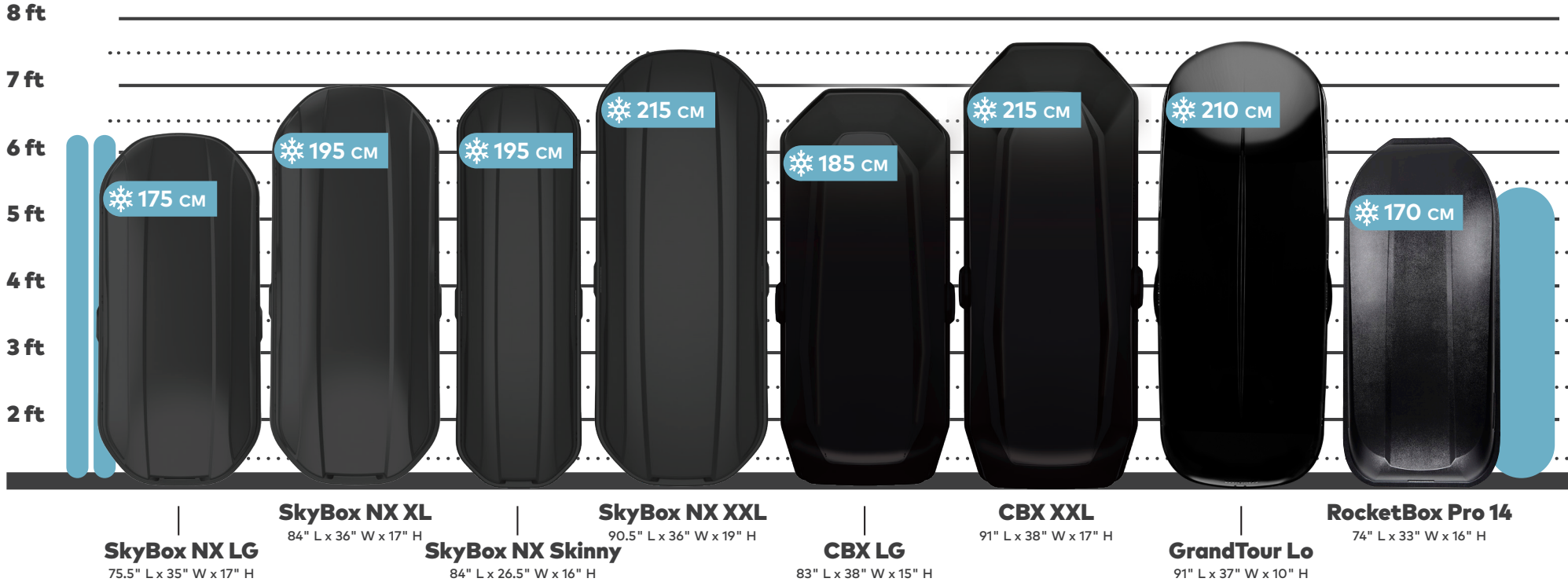


Hauls 14 cubic feet of gear.

CARGO BOXES

COMPARISON CHART

 MAX SKI LENGTH



The Mechanics of MOD

Introducing the MOD Drawer System. A modular, lockable, internal storage solution for your vehicle.



The Foundation

The MOD HomeBase is the building block to start your system.



Double up the Capacity

Add Toppers to your system (or even a second HomeBase if you prefer).



How It All Comes Together

Add GearCrates or GearTotes to the system if you want portability and easy in/out.



Full Functionality

Add in a host of accessories to complete the system including a drop in WorkSpace, MicroTotes, StretchNet, and Fridge Slide Mounting Kit.



MOD System Enhances Base Camp

With over 30 configurations, the MOD System is ready to be built and customized to work for your needs.

Choose from a range of accessories to create a storage solution that works for you. With the drawers and removable GearCrate and GearTote, The MOD System is the ultimate way to keep your vehicle organized and efficient.



MOD™ HomeBase BASE UNIT OF DRAWER SYSTEM

HOMEBASE MD #8007465, HOMEBASE LG #8007466, HOMEBASE XL #8007467



COMPETITIVE EDGE

- ▶ Heavy duty drawer slides give the drawer a robust feel
- ▶ Internal drawer divider included with multiple mounting locations
- ▶ Built in attachment points for Toppers, GearCrates, GearTotes, and even another HomeBase
- ▶ Replaces the cargo space floor if only using a single HomeBase

INSTALLATION TECHNOLOGY

- ▶ Attach to the tie-downs in your cargo space
- ▶ No drilling or modification required

LOCKING

- ▶ Lockable with Yakima SKS Lock Cores (Cores sold separately)

ASSEMBLY

- ▶ Mostly assembled, just install feet

SIZES

- ▶ 3 sizes available based on your vehicle cargo space

DIMENSIONS

- ▶ MD = 36" x 24" x 7"
- ▶ LG = 36" x 33.5" x 7"
- ▶ XL = 45" x 33.5" x 7"



▶ **Universal Fit:** HomeBase attaches to existing vehicle tie-down points.



▶ **Storage:** Locking storage drawer with 100lb load rating featuring internal multi-position bamboo divider.



▶ **Modularity:** HomeBase features built-in attachment points for adding a second level HomeBase or Toppers.



▶ **Construction:** Heavy duty powder-coated sheet metal drawer featuring bamboo top surface and boasting 250 lb. payload rating.

MOD™ Topper HALF-SIZE DRAWER ADD-ON

TOPPER MD #8007468, TOPPER LG #8007469, TOPPER XL #8007470



COMPETITIVE EDGE

- ▶ Strong metal construction will not rattle
- ▶ Bamboo top surface for a premium finish
- ▶ Heavy duty drawer slides give the drawer a robust feel
- ▶ Pairs well with a second Topper or MOD Totes

INSTALLATION TECHNOLOGY

- ▶ Quickly attaches to your MOD HomeBase system using Yakima torque limiting tool

LOCKING

- ▶ Lockable with Yakima SKS Lock Cores (Cores sold separately)

ASSEMBLY

- ▶ Fully assembled out of the box

SIZES

- ▶ 3 sizes available based on your vehicle cargo space

DIMENSIONS

- ▶ MD = 18" x 24" x 9"
- ▶ LG = 18" x 33.5" x 9"
- ▶ XL = 22.5" x 33.5" x 9"



▶ **Quick Attach:** Toppers quickly and easily attach to HomeBase with spring-loaded bolts.



▶ **Storage:** Locking storage drawer with 50lb load rating and additional 2" of height to maximize gear space.



▶ **Expand:** Add up to two Toppers to your HomeBase for more gear space.



▶ **Modularity:** Mix and match Toppers with GearCrates or GearTotes for over 30 different MOD configurations.

MOD™ Drawer System Collection

Modular in-vehicle storage system of drawers and accessories.



MOD GearCrate PREMIUM TOTE WITH LID

MD #8007478, LG/XL #8007479

COMPETITIVE EDGE

- ▶ Quick attach system goes on and off in seconds
- ▶ Front and rear anchors keep the totes secured in place
- ▶ Included thermoformed lid with built in tie down points
- ▶ Use multiple stackable crates to keep gear organized and ready for any adventure
- ▶ Includes a removable divider with hook and loop attachment

DIMENSIONS

- ▶ MD - 20" x 16" x 12"
- ▶ LG/XL - 30" x 16" x 11"



MOD GearTote BASIC SOFT TOTE

MD #8007480, LG/XL #8007481

COMPETITIVE EDGE

- ▶ Quick attach system goes on and off in seconds
- ▶ Front and rear anchors keep the totes secured in place
- ▶ Totes fold flat for easy storage when not in use
- ▶ Includes a removable divider with hook and loop attachment

DIMENSIONS

- ▶ MD - 20" x 16" x 10"
- ▶ LG/XL - 30" x 16" x 10"



MOD MicroTotes DRAWER ORGANIZATION CUBES

#8007498

COMPETITIVE EDGE

- ▶ 3 Large and 3 Small cubes
- ▶ Neatly divide the space of your MOD drawers
- ▶ Keeps small items organized and easy to find
- ▶ Add additional MicroTotes to fully compartmentalize the larger MOD drawer sizes
- ▶ Collapsible for easy storage

DIMENSIONS

- ▶ SM - 4.3" x 6.7" x 3.9"
- ▶ LG - 10.6" x 6.7" x 3.9"



MOD™ Drawer System Collection

Modular in-vehicle storage system of drawers and accessories.



MOD Work Space DROP IN TABLE TOP FOR HOMEBASE DRAWER

MD/LG #8007474, XL #8007475

COMPETITIVE EDGE

- ▶ Drops in and nests in the top of the MOD HomeBase drawer while still being able to open and close the drawer
- ▶ Smooth bamboo finish
- ▶ Slide the workspace forward and back for access to drawer contents

SIZES

- ▶ Work Space MD/LG fits MD and LG HomeBase
- ▶ Work Space XL fits HomeBase XL



MOD Fridge Slide Mounting Kit MOUNTING BRACKET FOR DOMETIC FRIDGE SLIDES

#8007476

COMPETITIVE EDGE

- ▶ Fridge Slide Mounting Kit adapts Dometic Fridge Slides (sold separately) to the top of the MOD LG and XL HomeBase
- ▶ Can be paired next to a MOD Topper (on XL only)



MOD Stretch Net CARGO NET FOR MOD SYSTEM

Stretch net adapts to keep items from sliding around on top of your MOD system.
#8007477

MOD Fit Kit 1 ATTACHMENT KIT FOR SELECT VEHICLES

Replaces factory hardware to strengthen existing tie down points.
#8007472



MOD Riser Kit ADDS EXTRA HEIGHT TO MOD HOMEBASE

Allows the drawer to clear hatch openings or to add storage underneath the HomeBase.
#8007471



OffGrid™ Basket Collection

PREMIUM ROOFTOP CARGO BASKET

OFFGRID MD #8007138, OFFGRID LG #8007139



INSTALLATION TECHNOLOGY

- ▶ Tool-free and intuitive BandClamp™

COMPETITIVE EDGE

- ▶ Rugged and stylish; The BandClamp hardware hugs the basket seamlessly to the roof rack creating a streamlined connection

ROOF RACK COMPATIBILITY

- ▶ Universal roof rack attachment

LOCKING

- ▶ Accepts 4 SKS locks (sold separately)

WEIGHT LIMIT

- ▶ 165-lbs (cargo box + contents)

BEST USE CASE

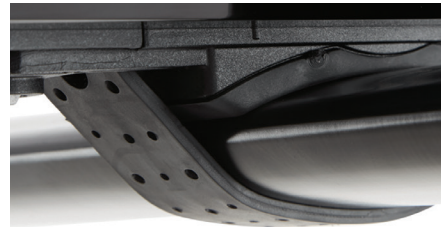
Rigid gear bins and duffel bags

CONSUMER

- ▶ Traditional Outdoorsman
- ▶ General Travel who wants a stylish and rugged look

AVAILABILITY

- ▶ Medium #8007138
- ▶ Large #8007139



▶ The BandClamp™ roof rack attachment creates a snug and streamline connection between the roof rack and basket.



▶ Great for hard-sided bins as well as weather-resistant duffels; secured down by Stretch net accessory.



OffGrid Medium



OffGrid Large

DIMENSIONS

OffGrid MD - 40" W X 44" L X 7" H

OffGrid LG - 49" W X 53" L X 7" H

Warrior Basket Collection UTILITY ROOFTOP CARGO BASKET

SKINNYWARRIOR #8007014, LOADWARRIOR #8007070,
MEGAWARRIOR #8007080



INSTALLATION TECHNOLOGY

- ▶ Tool-free knob and clamp system

COMPETITIVE EDGE

- ▶ Powder-coated steel construction lasts a lifetime
- ▶ Classic basket look

ROOF RACK COMPATIBILITY

- ▶ Universal roof rack attachment

LOCKING

- ▶ Add Locking Bracket
(sold separately) #8007064

WEIGHT LIMIT

- ▶ 165-lbs (basket + gear)

BEST USE CASE

- ▶ Rigid gear bins and duffel bags

CONSUMER

- ▶ Traditional Outdoorsman
- ▶ Core Outdoor
- ▶ General Travel Consumer who
wants a rugged look

AVAILABILITY

- ▶ SkinnyWarrior #8007014
- ▶ LoadWarrior #8007070
- ▶ MegaWarrior #8007080



The tool-free knob clamp attachment system ensures a tight fit to the roof rack.



Warrior basket design allows the user to attach other gear mounts to the basket like a FrontLoader bike mount.



SkinyWarrior



LoadWarrior



MegaWarrior

DIMENSIONS

SkinyWarrior - 23"W X 58"L X 6.5"H

LoadWarrior - 39"W X 44"L X 6.5"H

MegaWarrior - 48"W X 52"L X 6.5"H

OffGrid™ Accessories

Cargo basket accessories.



OffGrid Extensions INCREASES BASKET CAPACITY

OffGrid MD Extension #8007108
OffGrid LG Extension #8007109



Smart-Slot Kit 3 T-SLOT MOUNTING ADAPTER

Same part number accessory for
OffGrid & DoubleHaul™.
#8007356



SKS Lock 4 Pack LOCKS BASKET TO ROOF RACK

OffGrid MD and LG allow for the addition
of SKS lock cores.
#8007204 4-PACK

Works on OffGrid and Warrior Series



Stretch Cargo Nets KEEPS GEAR IN THE BASKET

SkinnyWarrior Stretch Net #8007018
Stretch Net MD #8007072
(OffGrid MD & LoadWarrior)
Stretch Net LG #8007081
(OffGrid LG & MegaWarrior)

Warrior™ Accessories

Cargo basket accessories.



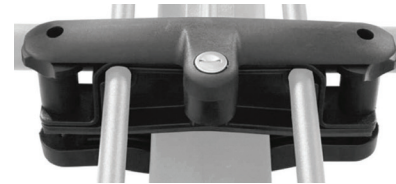
Hi-Lift Jack Carrier ATTACHMENT FOR WARRIOR BASKETS

Carries one HiLift jack on any of the Yakima®
Warrior baskets.
#8007077



Axe/Shovel Bracket CARRIES ONE AXE OR SHOVEL

Attaches to the side of any Warrior basket
and carries 1 paddle, shovel, or similar item.
#8007078



Locking Bracket WARRIOR BASKET SECURITY

Attaches to mounting brackets and locks
them in place with SKS locking system.
#8007064



Warrior Extensions INCREASES BASKET CAPACITY

LOADWARRIOR EXT. #8007074
MEGAWARRIOR EXT. #8007082
SKINNYWARRIOR EXT. #8007016



Light Mounting Bracket HARDWARE FOR MOUNTING LIGHTS

Creates a mounting point on any Warrior
basket for customers' own lights.
#8007075



PRO TIP

Baskets have multi-seasonal use.
Make sure your customer knows that
they can attach other gear mounts to
the basket. Such as FatCat EVO for
skis and boards, or roof-top bike and
boat mounts.



TRAILER

NO GEAR LEFT BEHIND



LowRider™ Trailer

A GEAR HAULING TRAILER FOR EVERYONE

BLACK WHEELS #8008130, ALLOY WHEELS #8008133



The LowRider trailer is designed specifically for paddlers seeking simplicity, strength, and affordability. With its sleek matte black finish and robust design, the LowRider takes the hassle out of transporting kayaks, canoes, and other personal watercrafts allowing you to focus on what awaits on the water.

COMPETITIVE EDGE

- ▶ Multiple cross bar mounting locations for any of your gear hauling needs - crossbar spread range 32" - 67"
- ▶ Solid axle and leaf spring suspension tuned for a smooth ride no matter the load
- ▶ Includes two 78" wide HD Bar crossbars with integrated tie-down endcaps
- ▶ Fully submersible LED lighting for easy boat ramp launches
- ▶ Ergonomic handle so you can use as hand cart to get into those tight spaces
- ▶ Trailer uses 2" ball, can be towed with all classes of hitch receiver
- ▶ Common tire size of 5.3 x 12" is easy to repair or replace at tire shops
- ▶ Hassle-free trailer kit (dealer)
- ▶ Ships in 4 Boxes (FedEx and UPS Approved)

WEIGHT LIMIT

- ▶ Transports up to 750 lbs / 20' canoe or kayak

CONSUMER

- ▶ Traditional Outdoorsman



Spare Tire Kit

TRAILER ACCESSORY

#8008131



- ▶ Spare Tire can be mounted in multiple positions along the trailer tongue
- ▶ Includes full spare tire mounted on rim, and attachment hardware

KickStand w/Wheel

TRAILER ACCESSORY

#8008132



- ▶ Stand includes wheel so you can roll this puppy around even when loaded

EasyRider™
PREMIUM TWO-LEVEL GEAR TRAILER
 #8008129



A gear trailer that's totally worth it. EasyRider features two levels of gear-hauling capability so no toy gets left behind.

CONNECTION

- ▶ 2" ball receiver
- ▶ Flat 4 electrical connection
- ▶ Safety chains

COMPETITIVE EDGE

- ▶ Engineered with 2 levels of gear-hauling capabilities
- ▶ Top level features HD Bar with built-in tie-down points
- ▶ Saltwater submersible
- ▶ Folding tongue for easy storage
- ▶ Molded handle for hand cart use
- ▶ Built-in pivoting kickstand

LOAD RATING

- ▶ 500-lbs

MAX SPEED LIMIT

- ▶ 75 mph / 120.7 kph
 (maintain local speed limits)

PRODUCT WEIGHT

- ▶ 175-lbs

COMPATIBILITY

- ▶ All Yakima® universal gear mounts

BEST USE CASE

- ▶ Heavy fishing kayaks
- ▶ SkyRise™ HD / SkyRise™
- ▶ Multi-sport adventures

USER

- ▶ Sportsman
- ▶ Avid Anglers



▶ The upper deck crossbars are adjustable horizontally for different gear mount needs.



▶ Shock absorbers allow for an easy ride for heavy or light loads of gear.



▶ Integrated kickstand rotates 90° into a stowed position for driving and down for parking.



▶ Folding tongue makes storage a breeze.

RACKandROLL Trailer™

LIGHTWEIGHT GEAR TRAILER

#8008107 RACKANDROLL 78



Made of lightweight aluminum, RACKandROLL carries gear easily upon shock absorbers that provide a full 4" of independent wheel travel.

CONNECTION

- ▶ 2" ball receiver
- ▶ Flat 4 electrical connection
- ▶ Safety chains

COMPETITIVE EDGE

- ▶ Foundation features Yakima® RoundBars
- ▶ Super lightweight
- ▶ Stands on end for easy storage
- ▶ Molded handle for hand cart use

LOAD RATING

- ▶ RACKandROLL 78: 250-lbs*
- *350 lbs with HD Shocks

MAX SPEED LIMIT

- ▶ 75 mph / 120.7 kph
- (maintain local speed limits)

PRODUCT WEIGHT

- ▶ RACKandROLL 78: 160-lbs

COMPATIBILITY

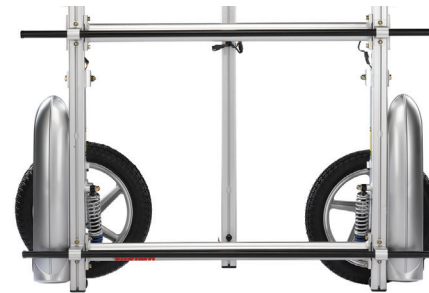
- ▶ All Yakima® gear mounts

BEST USE CASE

- ▶ Touring kayaks
- ▶ Paddleboards
- ▶ Whitewater kayaks
- ▶ Fishing kayaks

USER

- ▶ Sportsman
- ▶ Consumer concerned about lifting heavy gear overhead



The wheels of the trailer are easily removable to make for easy upright storage in a small space.



Integrated handle turns the trailer into a hand cart for easy maneuvering.



RACKandROLL crossbars are Yakima® RoundBars and allow the user to attach any Yakima gear mount.



LED trailer lights last years without needing replacement.

EasyRider Trailer Accessories

Accessories to build a full EasyRider product line.



Spare Tire Kit

SPARE TIRE AND MOUNT FOR EASYRIDER™

Neatly mounts underneath the lower level.

#8008125



Tent Kit

STABILIZER KIT FOR SKYRISE ON EASYRIDER™

Retractable jack-stand and wheel chocks to stabilize for tent use.

#8008127

RackandRoll Trailer Accessories

Accessories to build a full RackandRollr product line.



Heavy Duty Shock

HEAVY DUTY SHOCK FOR RACKANDROLL TRAILER

Upgrade 78" Rackand Roll trailer weight limit to 350lbs

#8008110



5 Spoke Tire

SPARE TIRE FOR RACKANDROLL TRAILER

Features a black hubcap and all mounting hardware

#8008121



Kick Stand

KICK STAND FOR RACKANDROLL TRAILER

Prevents trailer from tipping down when not attached to your hitch.

#8008115



EXO SYSTEM

MODULAR HITCH



The Mechanics of EXO

Turn your hitch into a do-anything, go-anywhere multi-tool.



The Foundation

The EXO SwingBase™ is the launchpad for all EXO mounts and accessories. Fits into a 2" hitch receiver.



Double up the Capacity

Double the space with a second tier of accessible storage with the EXO TopShelf™.



How It All Comes Together

The EXO SwingBase™ and EXO TopShelf feature a proprietary cleat system called the EXO Cleat. It allows the gear mounts to be easily interchanged without the need for tools. This is all done by two locking SpeedKnobs on each side of the articulating arms.



Full Functionality

Once the EXO System is configured to the desired set-up, the entire system has the ability to swing away from the vehicle for trunk access. An included kickstand can be deployed if the user is keeping the system swung open to ensure a level work surface.

EXO System - Components and Gear Mounts

These are the mounts and attachments to build a custom configuration.



EXO SwingBase™
EXO SYSTEM FOUNDATION
#8002715

The EXO SwingBase is the foundation to the EXO System. This is what attaches to the vehicle's 2-inch hitch receiver and swings out 90°.



EXO TopShelf™
EXO SYSTEM SECOND LEVEL
#8002716

Attaches to the EXO SwingBase and allows for a second level of gear storage. Rotates 180° relative to the EXO SwingBase.



EXO GearLocker™
PREMIUM REAR OF CAR CARGO BOX
#8002718

Thermo-formed locking cargo box mounts to either the EXO SwingBase or the EXO TopShelf with the EXO Cleat System. 10-cu. ft. of space.



EXO LitKit™
TAIL LIGHT AND LICENSE PLATE MOUNT
#8002720

Safety meeting checklist complete. EXO LitKit provides a license plate mount and taillights for safe travels when EXO is fully loaded.



EXO BackDeck™
BAMBOO TABLE TOP
#8002721

This bamboo topper installs to the EXO TopShelf to create a flat work surface. Comes with a carrying case.



EXO GearTotes™
COLLAPSIBLE ORGANIZATION TOTES
#8002719

Convenient collapsible totes made specifically for the EXO GearLocker. Features velcro partitions, sold in pairs— EXO GearLocker fits up to 4 totes.



EXO DoubleUp™
PREMIUM TWO BIKE CARRIER
 #8002722

The premium locking 2-bike carrier installs to the EXO TopShelf with the EXO Cleat system. Carries fat bikes, mountain, road, and lifestyle bikes.



EXO SnowBank™
PREMIUM SKI/BOARD MOUNT
 #8002723

This premium snow-gear-bank houses and locks up to 5 pairs of skis / 4 snowboards. It's adopted all of the best assets of the FatCat EVO.



EXO GearWarrior™
CARGO BASKET
 #8002724

EXO GearWarrior is just that, the beloved Warrior collection adapted for the EXO System. Great for rigid gear like coolers and totes.



EXO RoadShower Kit™
EXO ADAPTER FOR ROADSHOWER
 #8004112

Allows installation of RoadShower 4G or 7G onto your EXO System SwingBase or TopShelf.



EXO WarriorWheels™
WAGON ADAPTER KIT
 #8002712

Conveniently transforms EXO GearWarrior into a handy wagon. Simply installs and can be wheeled away. Includes 4 wheels and one handle.

EXO OpenRange™ OUTDOOR COOKING STORAGE SYSTEM

#8007447



INSTALLATION TECHNOLOGY

- ▶ Mounts to EXO System using EXO Cleat
- ▶ Stand Alone when paired with OpenRange Leg Kit ▶ Stand Alone when mounted on flat surfaces

GEAR PROTECTION

- ▶ Keeps your gear fully protected from weather, dust, and critters

COMPETITIVE EDGE

- ▶ Deploy for cooking from any location
- ▶ 85 liters of internal volume
- ▶ Ruggedized roto-molded enclosure
- ▶ Includes a lantern hook, utensil drawer, and backboard organizer

LOCKING

- ▶ SKS locking latches

USER

- ▶ Core Outdoor
- ▶ Active Family

ACCESSORIES

- ▶ OpenRange Leg Kit
- ▶ OpenRange Wood Side Table
- ▶ OpenRange Metal Side Table
- ▶ CookOut™ 2-Burner Camp Stove



Opens into a fully functional work station with an integrated utensil drawer and internal shelf.



Keep gear fully protected with SKS locking latches, and ruggedized roto-molded enclosure.



Seamlessly attaches to the EXO System for smooth transport and deployment.



Customizable across a range of build levels. Go deluxe with all the options, or start basic and expand as needed with other accessories.

EXO OpenRange™ Deluxe EXO SYSTEM CAMP KITCHEN BUNDLE

#8007540



BEST USE CASE

Great for tailgating or day trips. The unit opens into a fully functional work station to prep, cook, and serve from the vehicle hitch.

INSTALLATION TECHNOLOGY

- ▶ EXO Cleat - Requires EXO SwingBase™ or EXO TopShelf™

GEAR PROTECTION

- ▶ Keeps your gear fully protected from weather, dust, and critters

COMPETITIVE EDGE

- ▶ 85 liters of internal volume
- ▶ Ruggedize roto-molded enclosure
- ▶ Multiple Side Table height option

LOCKING

- ▶ SKS locking latches

INCLUDES

- ▶ Lantern Hook
- ▶ Utensil Drawer
- ▶ Backboard Organizer
- ▶ Collapsible Washbasin
- ▶ Drain Hose
- ▶ Wood Side Table
- ▶ Cutting Board
- ▶ Metal Side Table
- ▶ Leg Kit

USER

- ▶ Core Outdoor
- ▶ Active Family

Outdoor Kitchen System

Bring the comforts of a home kitchen to the outdoors.



The single unit design allows for organizing and transporting cooking gear. It easily opens into a fully functional work station, making it easy to prep, cook, and serve from the same spot.



EXO OpenRange seamlessly attaches to the EXO System for easy transport, and can be deployed into kitchen mode right from your vehicle, or can be relocated to a table or Leg Kit for stand-alone use.

EXO OpenRange Accessories

Go deluxe with all the options, or start basic and expand as needed.



OpenRange Leg Kit FREESTANDING LEG KIT

This sturdy leg kit attaches to the bottom of EXO OpenRange storage box, so you can set up to cook anywhere you want.
#8007449

- ▶ Telescoping legs provide height adjustment from 20" - 33" with slight levels of adjustment for unlevel ground
- ▶ Packs down into a fabric storage bag
- ▶ Engineered legs and frame design for stability and powder-coated for durability



OpenRange Wood Side Table BAMBOO SIDE TABLE

Bamboo wood side table expands your cook zone with valuable work surface. Packs down into fabric storage bag.
#8007451

- ▶ 13" x 27" bamboo table is UV protected with a premium finish
- ▶ Includes plastic cutting board and collapsible washbasin that nest interchangeably into the table



OpenRange Metal Side Table METAL SIDE TABLE

Metal side table for cooking with stoves of all sizes. Packs down into fabric storage bag.
#8007457

- ▶ 16" x 31" powder-coated steel surface is heat resistant and perfect for stove use
- ▶ Metal rod adds 3" to support camp stove propane tanks or doubles as a towel rack





WATER

CRAFT CARRYING SOLUTIONS



UPDATE

BigCatch™ FISHING KAYAK SADDLE

#8004091



INSTALLATION TECHNOLOGY

- ▶ Simple, tool-free mounting hardware

GEAR PROTECTION

- ▶ Soft rubber and felt pads protect kayaks

COMPETITIVE EDGE

- ▶ 150-lb weight rating to carry the heaviest fishing kayaks

ROOF RACK COMPATIBILITY

- ▶ Universal roof rack attachment

LOCKING

- ▶ Security bolts

WEIGHT LIMIT

- ▶ 150-lbs

BOAT CAPACITY

- ▶ 1

BEST USE CASE

- ▶ Fishing Kayaks
- ▶ Sit on top Kayaks
- ▶ Great for use on EasyRider™

ACCESSORY

- ▶ SmarT-Slot Kit 8004092
- ▶ RoundBar Kit 8004093

USER

- ▶ Sportsman
- ▶ Kayak Anglers



▶ The simple to use, tool-free knobs make install and removal extremely easy, and security bolts keep it in place.



▶ Four separate saddles conform to the hull of the boat insuring a perfect connection.



▶ Integrated rubber padding protects the boat's surface and felt padding allows for easy sliding when loading up.



▶ T-slot capable for a streamlined, low -profile install. T-Slot Kit sold separately.

UPDATE

JayLow™ ROOFTOP J-CRADLE KAYAK MOUNT

#8004073



A top-seller in the Yakima® boat line, the JayLow is a staple to the kayak transport line-up. It's ready to go out-of-the-box and installs in seconds. An easy add-on to a new kayak purchase.

INSTALLATION TECHNOLOGY

- ▶ Tool-free SpinVice™ mounting clamp

GEAR PROTECTION

- ▶ Foam padded uprights and soft rubber base protects kayaks

COMPETITIVE EDGE

- ▶ Best selling kayak rack from Yakima®
- ▶ Folds flat in a stowed position when not in use
- ▶ Can carry up to 2 kayaks in stacker position

ROOF RACK COMPATIBILITY

- ▶ Universal roof rack attachment

LOCKING

- ▶ Accepts 2 SKS Locks

WEIGHT LIMIT

- ▶ 80-lbs single boat / 110 lb in stacker mode

BOAT CAPACITY

- ▶ 1 or 2

BEST USE CASE

- ▶ White water kayak
- ▶ Flatwater kayak
- ▶ Recreational kayak

USER

- ▶ Recreational boater
- ▶ Families
- ▶ Core Outdoor
- ▶ Outdoor Millennial



▶ Integrated ramp feature assists the user in loading their kayak into the J-cradle.



▶ Easy-to-use lever adjusts the JayLow from stowed, to stacker, to single boat use.



▶ Capable of carrying two boats when set to stacker position (second set of straps and bow-stern tie downs required).



▶ Folds flat when not in use to keep a low-profile.

SweetRoll™ PREMIUM KAYAK SADDLE

#8004074 SET OF 4



An easy-to-use, ready-to-go out of the box solution for rooftop kayak transportation.

INSTALLATION TECHNOLOGY

- ▶ Tool-free SpinVice™ mounting clamp

GEAR PROTECTION

- ▶ Soft rubber rollers and soft rubber padding

COMPETITIVE EDGE

- ▶ Rear saddles feature built-in rollers for boat loading assistance

ROOF RACK COMPATIBILITY

- ▶ Universal roof rack attachment

LOCKING

- ▶ Accepts 4 SKS Locks

WEIGHT LIMIT

- ▶ 80-lbs

BOAT CAPACITY

- ▶ 1

BEST USE CASE

- ▶ Flat water
- ▶ Recreational kayaks

USER

- ▶ Families
- ▶ Core Outdoor
- ▶ Outdoor Millennial



▶ A complete system that includes rear saddles with integrated rollers for easy loading.



▶ Fully assembled to install to most crossbar shapes in minutes.



▶ Spring-loaded cradles automatically adjust to a variety of boat shapes.

Kayak Saddles

Kayak carrying solutions.



DeckHand™ TWO ROOFTOP KAYAK SADDLES

#8004083 SET OF 2

Sold as a set of two, double up or pair them with the HandRoll rollers.

INSTALLATION TECHNOLOGY

- ▶ Tool-free SpinVice™ mounting clamp

GEAR PROTECTION

- ▶ Felt pads and rubber grips

COMPETITIVE EDGE

- ▶ Flexible saddles conform to kayak's hull

ROOF RACK COMPATIBILITY

- ▶ Universal roof rack attachment

LOCKING

- ▶ Accepts 2 SKS Locks

WEIGHT LIMIT

- ▶ 80-lbs

BOAT CAPACITY

- ▶ 1

BEST USE

- ▶ Flatwater
- ▶ Recreational kayaks



HandRoll™ TWO ROOFTOP KAYAK ROLLERS

#8004082 SET OF 2

Sold as a set of two, double up or pair them with the DeckHand saddle.

INSTALLATION TECHNOLOGY

- ▶ Tool-free SpinVice™ mounting clamp

GEAR PROTECTION

- ▶ Soft rubber rollers

COMPETITIVE EDGE

- ▶ Rollers assist with boat loading; lock in place

ROOF RACK COMPATIBILITY

- ▶ Universal roof rack attachment

LOCKING

- ▶ Accepts 2 SKS Locks

WEIGHT LIMIT

- ▶ 80-lbs

BOAT CAPACITY

- ▶ 1

BEST USE

- ▶ Flatwater
- ▶ Recreational kayaks

Canoe

Canoe carrying solutions.



KeelOver™ ROOFTOP CANOE MOUNT

#8004069

An easy low-profile mount for canoes. Consists of 4 small brackets that sit out of the way when not in use.

INSTALLATION TECHNOLOGY

- ▶ Tool-free mounting hardware

GEAR PROTECTION

- ▶ Rubber pads protect gunwales

COMPETITIVE EDGE

- ▶ Takes up minimal crossbar space - No need to remove for use of other gear mounts
- ▶ Small price for Yakima® quality and results

ROOF RACK COMPATIBILITY

- ▶ Universal roof rack attachment

LOCKING

- ▶ N/A

WEIGHT LIMIT

- ▶ 120-lbs

BEST USE

- ▶ Canoe

J-Cradle

Kayak carrying solutions.



JayHook

UTILITY ROOFTOP J-CRADLE KAYAK MOUNT

8004084

A solid entry level, no frills, j-cradle style kayak mount that will get just about any boat to the water.

INSTALLATION TECHNOLOGY

- Simple, tool-free mounting hardware

GEAR PROTECTION

- Rubber and foam padding

COMPETITIVE EDGE

- Yakima quality at an affordable price point

ROOF RACK COMPATIBILITY

- Universal roof rack attachment

LOCKING

- N/A

WEIGHT LIMIT

- 80-lbs

BOAT CAPACITY

- 1

BEST USE

- Flat water
- Recreational kayaks



BigStack

ROOFTOP MULTI-KAYAK MOUNT

#8004041

Send your customers home with an easy solution for carrying multiple kayaks on with one mount.

INSTALLATION TECHNOLOGY

- Simple, tool-free mounting hardware

GEAR PROTECTION

- Soft rubber padding on uprights

COMPETITIVE EDGE

- Folds into a stowed position with the push of a button

ROOF RACK COMPATIBILITY

- Universal roof rack attachment

LOCKING

- Accepts 2 SKS Locks

WEIGHT LIMIT

- 165-lbs (roof rack weight limit)

BOAT CAPACITY

- 4

BEST USE

- White water

ShowDown™

PREMIUM ROOFTOP LOAD-ASSISTING WATER MOUNT

#8004081



For the kayak or SUP consumer that is weary of lifting their heavy gear overhead, onto their vehicle. The ShowDown assists the user by allowing them to load their water craft at waist level, then slide the gear into place using the handled mechanism.

INSTALLATION TECHNOLOGY

- ▶ Tool-free SpinVice™ mounting clamp

GEAR PROTECTION

- ▶ Flexible saddles and felt pads protect kayaks / paddle boards

COMPETITIVE EDGE

- ▶ Allows user to load gear at waist height
- ▶ Tool-free adjustable saddles
- ▶ Built-in tie-down points

ROOF RACK COMPATIBILITY

- ▶ Universal roof rack attachment

LOCKING

- ▶ Accepts 2 SKS Locks

WEIGHT LIMIT

- ▶ 80-lbs

BOAT CAPACITY

- ▶ 1 kayak or 2 SUPs

BEST USE CASE

- ▶ Stand Up Paddle Boards (x2)
- ▶ Flatwater kayak
- ▶ Recreational kayak

USER

- ▶ Recreational boater
- ▶ Families
- ▶ Core Outdoor



▶ Ergonomic handles on each mount make it easier for the user to lift and roll their water craft into place.



▶ Tool-free SpinVice clamp installs easily and locks to the roof rack.



▶ Capable of carrying up to two SUP boards or one kayak.



▶ Includes two types of saddles, kayak, and SUP, slides up and down tool-free, has built-in tie-down points and felt pads.

SUPDawg™

PREMIUM ROOFTOP SURF/SUP MOUNT

#8004075



The pride and joy of carrying SUPs or surfboards. The SUPDawg is by far one of Yakima's most premium gear mounts. Consumers can load their gear worry-free because the built-in straps do the work for them, not to mention the rollers, assist in sliding boards into place.

INSTALLATION TECHNOLOGY

- ▶ Tool-free SpinVice™ mounting clamp

GEAR PROTECTION

- ▶ Soft rubber padding protects paddleboards and surfboards

COMPETITIVE EDGE

- ▶ Built-in rollers for easing boards into place
- ▶ Integrated tie-down system cinches boards and tucks away
- ▶ Strap has an interior metal cable for security

ROOF RACK COMPATIBILITY

- ▶ Universal roof rack attachment

BEST USE CASE

- ▶ Stand Up Paddle Boards
- ▶ Surfboards

LOCKING

- ▶ Includes 4 SKS Locks

USER

- ▶ Surf specific gear mount

WEIGHT LIMIT

- ▶ 66-lbs

BOARD CAPACITY

- ▶ 2



▶ Hassle-free integrated tie-downs cinch the boards to the mount then tuck away and the release button locks gear.



▶ Each mount features built-in rollers to easily slide large SUP boards onto the mount.



▶ Integrated straps are reinforced with a steel cable for added security.



▶ The SpinVice clamps are intuitive, easy to use, and lock to the crossbar.

SUP/Surf Pads

Crossbar pads for protection.



Aero Crossbar Pads

NYLON-WRAPPED FOAM PADS

#8007413 AERO CROSSBAR PADS 30"

INSTALLATION TECHNOLOGY

- ▶ Partitioned velcro avoids roof rack towers or fairing

GEAR PROTECTION

- ▶ Foam padding with a nylon cover

COMPETITIVE EDGE

- ▶ Partitioned velcro avoids roof rack towers or fairing
- ▶ No-slip strip on top grabs boards

ROOF RACK COMPATIBILITY

- ▶ Aerodynamic crossbars:
JetStream™, CoreBar™, HD Bar, Factory installed crossbars

LOCKING

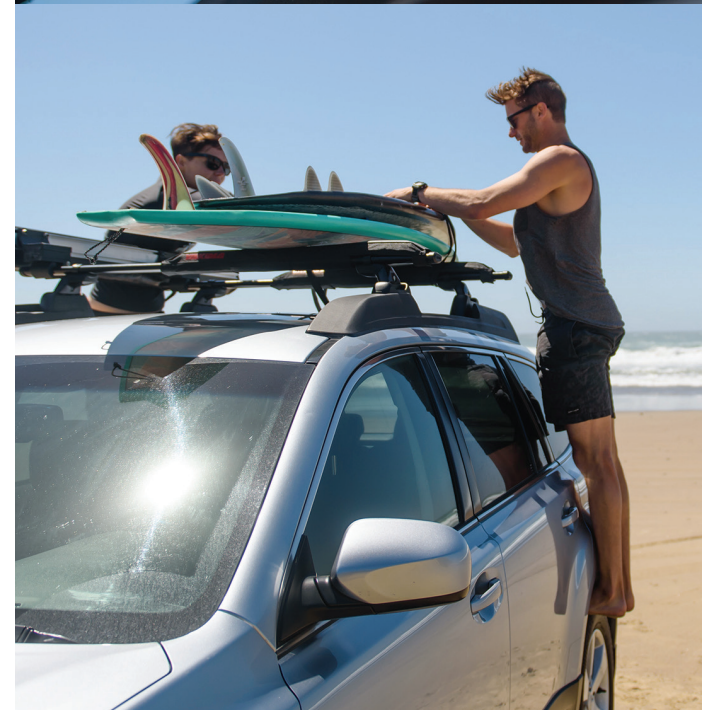
- ▶ N/A

WEIGHT LIMIT

- ▶ Depends on the roof rack weight limit

BEST USE

- ▶ Stand Up Paddle Boards
- ▶ Surfboards
- ▶ Kayaks



Water Accessories

Accessories to build a full Water product line, from boat tie-downs to paddle carriers.



RipCord™ PREMIUM LOCKING TIE-DOWN STRAPS

Steel cable covered in nylon strap with locking mechanism.
Use in place of heavy-duty straps to add gear locking feature.
Includes 2 SKS locks.

#8004048

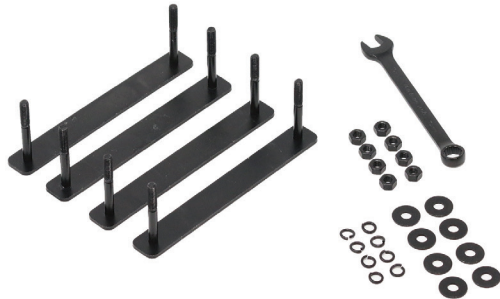


TopGrip™ T-SLOT PADDLE CARRIER

Attach it to any Yakima® crossbar or our ShowDown mount and secure your paddle in the padded clamps.
Works for axes, shovels, or other long items too.

#8004086





SmarT-Slot Kit 4
T-SLOT CROSSBAR ADAPTER - BIGCATCH™

Creates a streamlined low-profile attachment to t-slot crossbars. For use with BigCatch™.
#8004170



RoundBar™ Adapter Kit
ROUNDBAR CROSSBAR ADAPTER - BIGCATCH™

Transforms an aero-crossbar mount to a RoundBar mount.
For use with BigCatch™.
#8004093



Hood Anchor
TEMPORARY TIE-DOWN POINT

Heavy-duty anchor for use on vehicles that don't feature an easy-access tie-down point for securing boats and boards.
#8007416



Bow/Stern Tie-Downs
TIE-DOWN RATCHET SYSTEM

Easy to use cord and ratchet system for securing boats.
No need for Scout-level knot tying.
#8004031



Heavy Duty Straps
EXTRA-STRONG TIE-DOWNS

Nylon straps with heavy-duty rubber-covered cinching clasps.
#8005006

DoubleHaul™ PREMIUM ROOFTOP FLY ROD CARRIER

#8004087



Considered the crown jewel of the Yakima® Fishing collection, the DoubleHaul brings it home with its protective solution to hauling fully rigged fly rods.

INSTALLATION TECHNOLOGY

- ▶ Tool-free ergonomic handles

GEAR PROTECTION

- ▶ Felt-lined reel box and individual plastic-lined rod tubes
- ▶ Keeps rods out of the elements

COMPETITIVE EDGE

- ▶ Can house up to 4-fully rigged rods—reels and all
- ▶ Maximum rod length of 10'
- ▶ Accommodates Spey and fighting butts

ROOF RACK COMPATIBILITY

- ▶ Universal roof rack attachment

ROD CAPACITY

- ▶ 4

ACCESSORY

- ▶ Smart-Slot™ Kit 3 #8007356

BEST USE CASE

- ▶ Fly Rods

LOCKING

- ▶ Integrated SKS Locks the reel box and entire mount to vehicle

USER

- ▶ Avid Fly Fisher



Four separated felt-lined slots keep fully rigged rods organized and protected.



Configurable to the half-size option of 6 feet for smaller vehicles.



Tool-free installation locks DoubleHaul to the roof rack.



Locking reel box keeps rods safe inside.

TopWater™ PREMIUM ROOFTOP FISHING ROD BOX

#8004088



Harnessing the power of our cargo box manufacturing, the TopWater bridges the gap between cargo space and fishing. Engineered and designed to transport a quiver of rods near or far, it keeps rods safe and secure.

INSTALLATION TECHNOLOGY

- ▶ Tool-free ergonomic mounting hardware

GEAR PROTECTION

- ▶ Interior foam braces support rods and elevate reels
- ▶ Heavy-duty rubber bands keep rods in place
- ▶ Keeps rods out of the elements

COMPETITIVE EDGE

- ▶ Can house up to 8-fully rigged rods—reels and all—of any type
- ▶ Maximum rod length of 8'
- ▶ Lower storage for low profile tackle boxes and gear
- ▶ Foam braces can be removed for other cargo usages like winter sports

ROOF RACK COMPATIBILITY

- ▶ Universal roof rack attachment

LOCKING

- ▶ Integrated SKS Lock

ACCESSORY

- ▶ SmarT-Slot™ Kit 5 #8004094

ROD CAPACITY

- ▶ 8 fully-rigged

BEST USE CASE

- ▶ Spinning or Casting Rods

USER

- ▶ Avid Anglers



Universal tool-free mounting hardware is hidden inside of the box, is hassle-free, and is easy to install.



Foam braces with an industrial rubber band holds the rods in place and prevents movement.



Cavity underneath rods allows for storage of low-profile tackle boxes, nets, and other gear.



TopWater locks rods and gear inside for the anglers' peace of mind.

ReelDeal™ ROOFTOP FISHING ROD CARRIER

#8004089



Eight rods? No problem. The ReelDeal allows anglers to quickly and easily load up and head out. When the fish aren't biting or there's a need to switch up the tackle, the ReelDeal allows the angler to be nimble on both fronts.

INSTALLATION TECHNOLOGY

- ▶ Tool-free ergonomic knobs

GEAR PROTECTION

- ▶ Full-length rubber padding

COMPETITIVE EDGE

- ▶ Securely transport up to 8 fully rigged-up fishing rods of any style
- ▶ Single-button side access for easy loading/unloading
- ▶ Simple, compact, and economical

ROOF RACK COMPATIBILITY

- ▶ Universal roof rack attachment

ROD CAPACITY

- ▶ 8

LOCKING

- ▶ Integrated SKS locks gear to the mount
- ▶ Included security tool locks mount to the vehicle

BEST USE CASE

- ▶ Any type of rod

USER

- ▶ Anglers
- ▶ Coastal



▶ Clamshell open and close makes loading up rods easy and the protective padding protects rods.



▶ Easily accepts fly rods of all shapes and sizes; spey or fighting butts.



▶ Each mount locks together keeping the rods locked in place.



▶ Load up bait casters for the whole family - kids rod to adults - depending on roof rack spread.

SNOW

CARRYING SOLUTIONS



FatCat™ EVO

PREMIUM ROOFTOP SKI AND SNOWBOARD MOUNT

FatCat EVO 4 #8003095, FatCat EVO 6 #8003096



INSTALLATION TECHNOLOGY

- ▶ Tool-free and intuitive BandClamp™

GEAR PROTECTION

- ▶ Clamshell arms are fully covered with flexible rubber padding

COMPETITIVE EDGE

- ▶ DoubleJoint™ hinge expands for easy clamping over thick skis/boards
- ▶ Large open/close button allows user to keep gloves on
- ▶ SkiLift™ technology elevates gear away from the vehicle roof

ROOF RACK COMPATIBILITY

- ▶ Universal roof rack attachment
- ▶ T-slot capable with Smart-Slot Kit 2 Adapter (sold separately)

LOCKING

- ▶ Includes 2 SKS Locks - Locks gear to rack and rack to vehicle

CAPACITY

- ▶ FatCat EVO 4 - 4 sets of skis (up to 136mm wide) or 2 boards
- ▶ FatCat EVO 6 - 6 sets of skis (up to 136mm wide) or 4 boards

CONSUMER

- ▶ Core Outdoor
- ▶ Avid ski/snowboarders

AVAILABILITY

- ▶ 4 #8003095, 6 #8003096

ACCESSORIES

- ▶ Smart-Slot Kit 2 #8003098



▶ OverHang™ design allows for the FatCat EVO to be mounted closer to the edge of the crossbar for easy loading and unloading.



▶ An integrated SkiLift™ function improves the clearance of tall bindings so they don't interfere with the vehicle roof.



▶ Available in two sizes; FatCat EVO 4 and 6. Capable of carrying 2 boards/4 ski sets, or 4 boards/6 ski sets.



▶ FatCat EVO opens and closes easily due to the thoughtfully designed glove-capable button.

UPDATE

FreshTrack™ **ENTRY-LEVEL SKI AND SNOWBOARD MOUNT**

FreshTrack 4 #8003092, FreshTrack 6 #8003093



A great entry-level ski and snowboard mount for someone who is on a budget or just getting into winter sport roof mounts.

INSTALLATION TECHNOLOGY

- ▶ Simple, tool-free mounting hardware

GEAR PROTECTION

- ▶ Rubber padding protects skis and boards

COMPETITIVE EDGE

- ▶ Locking snow-mount at entry price-point

ROOF RACK COMPATIBILITY

- ▶ Universal roof rack attachment

LOCKING

- ▶ Includes 2 SKS Locks

CAPACITY

- ▶ FreshTrack 4 - 4 sets of skis (up to 120mm wide) or 2 boards
- ▶ FreshTrack 6 - 6 sets of skis (up to 120mm wide) or 4 boards

CONSUMER

- ▶ Outdoor Millennial
- ▶ Intermediate ski/snowboarders



EXO™ SnowBank
PREMIUM EXO SYSTEM SNOW MOUNT
 #8002723

INSTALLATION TECHNOLOGY

- ▶ EXO Cleat - requires EXO SwingBase™ or EXO TopShelf™

COMPETITIVE EDGE

- ▶ Hitch mounted ski and snowboard carrier
- ▶ Part of the EXO System - can be mounted on any level

LOCKING

- ▶ Locking SpeedKnob™ and integrated SKS mount lock - locks gear to the rack and rack to the vehicle

CAPACITY

- ▶ 5 pairs of skis or 4 snowboards

USER

- ▶ Avid ski and snowboarders
- ▶ Core Outdoor
- ▶ Active Families



BUILD A STRONGER SNOW LINE

CARGO BOX	MAX SKI	PART #
CBX LG	185 cm	8007518
CBX XXL	215 cm	8007519
GrandTour Lo	215 cm	8007398
SkyBox NX LG	175 cm	8007369
SkyBox NX XL	195 cm	8007370
SkyBox NX Skinny	195 cm	8007368
SkyBox NX XXL	215 cm	8007371



CBX LG



GrandTour Lo



SkyBox NX XL

SUPPORT


OUR TOOLS FOR YOUR SUCCESS



Digital Support Tools

USEFUL TOOLS AT YOUR FINGERTIPS

We offer an extensive support network from online databases to actual human-powered dealer service reps.

ONLINE TRAINING	PRODUCT DETAILS & VEHICLE FIT LIBRARY	MARKETING ASSETS	TALK TO YOUR YAKIMA DEALER REP.
<p>Yakimagarage.com</p>	<p>Yakimatech.com</p>	<p>Yakima.com/downloadcenter</p>	<p>Yakimadealer.com 800-ANY-ROAD (800-269-7623)</p>
<p>Watch videos and take quizzes online to learn about Yakima products and the brand, and to earn discounts.</p>	<p>Our extensive database dating back to the 70s. A hub for all things product related and vehicle fit information.</p>	<p>This is your go-to for everything from product photography, lifestyle photos, campaign assets, as well as marketing and sales tools.</p>	<p>Your Yakima Dealer Service Representative is ready and willing to help you with anything you may need during the partnership. dealer.service@yakima.com</p>
DEALER HUB	PRO PROGRAM	DIGITAL SHOWROOM	WARRANTY
<p>Yakimadealer.com</p>	<p>Yakima.com/pro</p> 	<p>showroom.yakima.com</p>	<p>dealer.service@yakima.com 800-269-7623</p>
<p>Place and review orders, and find tools to support you as a dealer.</p>	<p>Individuals who work in the outdoor or automotive industries are eligible for an exclusive discount. Approval required.</p>	<p>Learn about upcoming launching product. Request access via your Yakima sales representative.</p>	<p>If something isn't working quite right or parts are missing from a new product, the Yakima Warranty Team is here to support you.</p>

Headquarters

YAKIMA PRODUCTS, INC.

4101 Kruse way
 Lake Oswego, OR 97035

Become a Dealer

Inquire at yakima.com/becomeadealer

In-Store Merchandising

FIXTURES AND GRAPHICS FOR FOOTPRINTS BIG AND SMALL

At Yakima®, we understand that storefronts come in all different shapes and sizes. From massive square footage to small "mom and pop" shops and everything in between. That's why we offer a little something for everyone and every slatwall from coast to coast. **To request a Merchandising catalog contact your Yakima Representative.**

Yakima Retail Display and POP Toolkit

The Yakima® Tool Kit enables dealers to Take It Easy when it comes to retail merchandising solutions and branding opportunities. It provides visual, intuitive, and comprehensive ordering aids to make sense of the complete suite offered.

ORDER	VIEW MERCH OPTIONS
Merchandising & Swag Order Form	Merchandising and Branding Catalog
Use order form to place items for Merchandising, POP, Field Assets, or Swag.	See every component of Merchandising, POP, and field assets available. Features a modular display gallery for easy ordering, 3D models, and augmented reality tools.

View In-Store Freestanding Displays Using Augmented Reality

Use the AR feature via QR codes to visualize displays in the actual storefront space.



FREESTANDING

POINT-OF-PURCHASE

SLAT DISPLAYS

HITCH DISPLAYS

FIELD ASSETS

CARGO DISPLAYS



DEALER WORKBOOK 2027

NEW AND IN-LINE PRODUCTS

For more information on ordering products, in-store displays, or if you need further assistance, please contact your Yakima representative.

Get in touch with your dealer services representative.
800-ANY-ROAD (800-269-7623) or dealer.service@yakima.com

Scan this QR code to download the full Yakima Digital Dealer Workbook.

